

# Solved Paper 2022

## PHYSICS (TERM-I)

Time : 90 Minutes

Class-XII

Max. Marks : 35

### General Instructions :

- (i) This question paper contains 55 questions out of which 45 questions are to be attempted. All questions carry equal marks.
- (ii) The question paper consists of three Sections – Section A, B and C.
- (iii) **Section – A** contains 25 questions. Attempt any 20 questions from Q. No. 01 to 25.
- (iv) **Section – B** contains 24 questions. Attempt any 20 questions from Q. No. 26 to 49.
- (v) **Section – C** contains 6 questions. Attempt any 5 questions from Q. No. 50 to 55.
- (vi) The first 20 Questions attempted in **Section – A & Section – B** and first 5 questions attempted in **Section – C** by a candidate will be evaluated.
- (vii) There is only one correct option for every multiple choice question (MCQ) Marks will not be awarded for answering more than one option
- (viii) There is no negative marking.

Series: SSJ/2,

055/2/4

### SECTION - A

1. A negatively charged object X is repelled by another charged object Y. However an object Z is attracted to object Y. Which of the following is the most possibility for the object Z?

- (a) positively charged only
- (b) negatively charged only
- (c) neutral or positively charged
- (d) neutral or negatively charged

Ans. Option (c) is correct.

*Explanation:* X is negatively charged. Since it is repelled by Y, Y is also negatively charged. Now, if Z is neutral or positively charged then it will be attracted by Y.

2. In an experiment three microscopic latex spheres are spread into a chamber and became charged with charges  $+3e, +5e$  and  $-3e$  respectively. All the three spheres came in contact simultaneously for a moment and got separated. Which one of the following are possible values for the final charge on the spheres?

- (a)  $+5e, -4e, +5e$
- (b)  $+6e, +6e, -7e$
- (c)  $-4e, +3.5e, +5.5e$
- (d)  $+5e, -8e, +7e$

Ans. Option (b) is correct.

*Explanation:* When three spheres are brought in contact the net charge will be  $-3e + 3e + 5e = 5e$   
When separated this  $5e$  charge will be distributed.

In option (A), Total charge is  $6e$ . So, this option is not correct.

In option (B), total charge is  $5e$ . So, this option is correct.

In option (C), Total charge is  $5e$ . But this violates quantization of charge principle. Hence this option is not correct.

In option (D), total charge is  $-10e$ , Hence this option is not correct.

So, (B) is the correct option.

3. An object has charge of 1 C and gains  $5.0 \times 10^{18}$  electrons. The net charge on the object becomes:

- (a)  $-0.80$  C
- (b)  $+0.80$  C
- (c)  $+1.80$  C
- (d)  $+0.20$  C

Ans. Option (d) is correct.

*Explanation:* Charge of 1 electron =  $-1.6 \times 10^{-19}$  C

So, Charge of  $5 \times 10^{18}$  electrons

$$= -5 \times 10^{18} \times 1.6 \times 10^{-19} \text{ C} \\ = -0.8 \text{ C}$$

Already existing charge = 1 C

So, net charge at present =  $1 - 0.8 = 0.2$  C

4. Kirchoff's first rule  $\sum I = 0$  and second rule  $\sum IR = \sum E$  (where the symbols have their usual meanings) are respectively based on:

- (a) conservation of momentum and conservation of charge
- (b) conservation of energy, conservation of charge
- (c) conservation of charge, conservation of momentum
- (d) conservation of charge, conservation of energy

Ans. Option (d) is correct.

5. The electric power consumed by a 220 V – 100 W bulb when operated at 110 V is

- (a) 25 W
- (b) 30 W
- (c) 35 W
- (d) 45 W

**Ans. Option (a) is correct.**

*Explanation:* Resistance of the bulb = R

$$\begin{aligned} &= \frac{V^2}{P} \\ &= \frac{220^2}{100} \\ &= 484 \Omega \end{aligned}$$

Power consumed by the bulb when connected to

$$110 \text{ V is } \frac{V^2}{R} = \frac{110^2}{484} = 25 \text{ W}$$

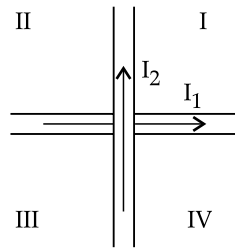
6. Which of the following has negative temperature coefficient of resistivity?

- (a) metal
- (b) metal and semiconductor
- (c) semiconductor
- (d) metal and alloy

**Ans. Option (c) is correct.**

*Explanation:* Resistance of semiconductor decreases with rise in temperature due to rupture of covalent bonds.

7. Two wires carrying currents  $I_1$  and  $I_2$  lie, one slightly above the other, in a horizontal plane as shown in figure. The region of vertically upward strongest magnetic field is



- (a) I
- (b) II
- (c) III
- (d) IV

**Ans. Option (b) is correct.**

*Explanation:* Applying right hand thumb rule, the strongest magnetic field will be in region II.

8. Two parallel conductors carrying current of 4.0 A and 10.0 A are placed 2.5 cm apart in vacuum. The force per unit length between them is:

- (a)  $6.4 \times 10^{-5} \text{ N/m}$
- (b)  $6.4 \times 10^{-2} \text{ N/m}$
- (c)  $4.6 \times 10^{-4} \text{ N/m}$
- (d)  $3.2 \times 10^{-4} \text{ N/m}$

**Ans. Option (d) is correct.**

*Explanation:*

$$\begin{aligned} F &= \frac{\mu_0 i_1 i_2}{2\pi r} \\ &= \frac{4\pi \times 10^{-7} \times 4 \times 10}{2\pi \times 2.5 \times 10^{-2}} \\ &= 3.2 \times 10^{-4} \text{ N/m} \end{aligned}$$

9. If an ammeter is to be used in place of a voltmeter, then we must connect with the ammeter a:

- (a) low resistance in parallel
- (b) low resistance in series

(c) high resistance in parallel

(d) high resistance in series

**Ans. Option (a) is correct.**

*Explanation:* Ammeter and voltmeter are basically galvanometer.

When a high resistance is connected in series with the galvanometer it works as a voltmeter and when a low resistance is connected in parallel with the galvanometer it works as an ammeter.

10. The magnetic field at the centre of a current carrying circular loop of radius R, is  $B_1$ . The magnetic field at a point on its axis at a distance R from the center of the loop is  $B_2$ . Then the ratio ( $B_1/B_2$ ) is

- (a)  $2\sqrt{2}$
- (b)  $\frac{1}{\sqrt{2}}$
- (c)  $\sqrt{2}$
- (d) 2

**Ans. Option (a) is correct.**

*Explanation:* Magnetic field at the centre

$$B_1 = \frac{\mu_0 i}{2R}$$

Magnetic field on the axis

$$\begin{aligned} B_2 &= \frac{\mu_0 i R^2}{2(R_2^2 + R^2)^{3/2}} \\ &= \frac{\mu_0 i}{2^{5/2} R} \end{aligned}$$

$$\therefore \frac{B_1}{B_2} = 2^{3/2} = 2\sqrt{2}$$

11. The self-inductance of a solenoid of 600 turns is 108 mH. The self-inductance of a coil having 500 turns with the same length, the same radius and the same medium will be

- (a) 95 mH
- (b) 90 mH
- (c) 85 mH
- (d) 75 mH

**Ans. Option (d) is correct.**

*Explanation:*

$$L = \frac{\mu_0 N^2 A}{l}$$

So,  $L \propto N^2$

$$\therefore \frac{L_1}{L_2} = \frac{N_1^2}{N_2^2}$$

Or,  $\frac{108}{L_2} = \frac{600^2}{500^2}$

$$\therefore L_2 = 108 \times \frac{25}{36} = 75 \text{ mH}$$

12. The rms current in a circuit connected to 50 Hz ac source is 15 A. The value of the current in the

circuit  $\left(\frac{1}{600}\right)$  s after the instant the current is zero,

is:

- (a)  $\frac{15}{\sqrt{2}}$  A                      (b)  $15\sqrt{2}$  A  
 (c)  $\frac{\sqrt{2}}{15}$  A                        (d) 8 A

Ans. Option (a) is correct.

*Explanation:*  $I = I_0 \sin \omega t$   
 or,  $I = I_{\text{rms}} \times \sqrt{2} \times \sin(2\pi ft)$   
 or,  $I = 15 \times \sqrt{2} \times \sin\left(\frac{2 \times \pi \times 50}{600}\right)$   
 or,  $I = 15 \times \sqrt{2} \times \sin\left(\frac{\pi}{6}\right)$   
 $\therefore I = \frac{15}{\sqrt{2}}$

13. In a circuit the phase difference between the alternating current and the source voltage is  $\frac{\pi}{2}$ .

Which of the following cannot be the element(s) of the circuit?

- (a) only C                              (b) only L  
 (c) L and R                            (d) L or C

Ans. Option (a) is correct.

*Explanation:* Only pure C and L can provide the  $\pi/2$  phase difference. But if R is also present there then the phase difference deviates from  $\pi/2$ .

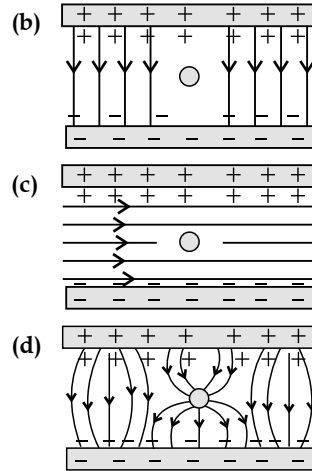
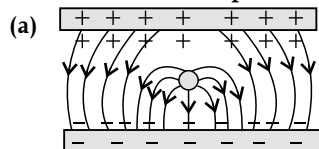
14. The electric potential  $V$  at any point  $(x, y, z)$  is given by  $V = 3x^2$  where  $x$  is in metres and  $V$  in volts. The electric field at the point  $(1 \text{ m}, 0, 2 \text{ m})$  is:

- (a) 6 V/m along  $-x$ -axis  
 (b) 6 V/m along  $+x$ -axis  
 (c) 1.5 V/m along  $-x$ -axis  
 (d) 1.5 V/m along  $+x$ -axis

Ans. Option (a) is correct.

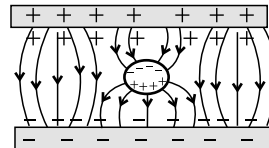
*Explanation:*  $E = -\frac{dV}{dx}$   
 or,  $E = -\frac{d}{dx}(3x^2)$   
 $\therefore E = -6x$   
 Putting  $x = 1$ ,  
 $E = 6 \text{ V/m}$  along  $-x$  direction.

15. Which of the diagrams correctly represents the electric field between two charged plates if a neutral conductor is placed in between the plates?



Ans. Option (d) is correct.

*Explanation:*



Upper side of the neutral conductor will be negatively charged. Lower side of the neutral conductor will be positively charged. Then the field lines will be from negative to positive as shown in the diagram.

16. A variable capacitor is connected to a 200 V battery. If its capacitance is changed from  $2 \mu\text{F}$  to  $X \mu\text{F}$ , the decrease in energy of the capacitor is

- (a)  $1 \mu\text{F}$                               (b)  $2 \mu\text{F}$   
 (c)  $3 \mu\text{F}$                               (d)  $4 \mu\text{F}$

Ans. Option (a) is correct.

*Explanation:* Energy =  $\frac{1}{2} CV^2$

In 1<sup>st</sup> case:  $E_1 = \frac{1}{2} \times 2 \times 10^{-6} \times 200^2$   
 $= 4 \times 10^{-2} \text{ J}$

In 2<sup>nd</sup> case:  $E_2 = \frac{1}{2} \times (X) \times 10^{-6} \times 200^2 \text{ J}$

Decrease in energy =  $E_1 - E_2$   
 or,  $2 \times 10^{-2} = 4 \times 10^{-2} - 2 \times (X) \times 10^{-2}$   
 or,  $2 = 4 - 2X$   
 $\therefore X = 1 \mu\text{F}$

17. A potential difference of 200 V is maintained across a conductor of resistance 100  $\Omega$ . The number of electrons passing through it in 1 s is

- (a)  $1.25 \times 10^{19}$                       (b)  $2.5 \times 10^{18}$   
 (c)  $1.25 \times 10^{18}$                       (d)  $2.5 \times 10^{16}$

Ans. Option (a) is correct.

*Explanation:*  $I = \frac{V}{R} = \frac{200}{100} = 2 \text{ A}$

Again,  $I = \frac{ne}{t}$

or,  $2 = ne(\text{since } t = 1 \text{ s})$   
 or,  $n = 2/e = 2/(1.6 \times 10^{-19})$   
 $\therefore n = 1.25 \times 10^{19}$

18. The impedance of a series LCR circuit is:

- (a)  $R + X_L + X_C$       (b)  $\sqrt{\frac{1}{X_C^2} + \frac{1}{X_L^2} + R^2}$   
 (c)  $\sqrt{X_L^3 - X_C^2 + R^2}$       (d)  $\sqrt{R^2 + (X_L - X_C)^2}$

Ans. Option (d) is correct.

19. When an alternating voltage  $E = E_0 \sin \omega t$  is applied

to a circuit, a current  $I = I_0 \sin\left(\omega t + \frac{\pi}{2}\right)$  flows

through it. The average power dissipated in the circuit is

- (a)  $E_{\text{rms}} I_{\text{rms}}$       (b)  $E_0 I_0$   
 (c)  $\frac{E_0 I_0}{\sqrt{2}}$       (d) Zero

Ans. Option (d) is correct.

*Explanation:* Power =  $V_{\text{RMS}} \times I_{\text{rms}} \times \cos \phi$

Here  $\phi = \frac{\pi}{2}$

So, Power = 0

20. A current carrying wire kept in a uniform magnetic field, will experience a maximum force when it is

- (a) perpendicular to the magnetic field  
 (b) parallel to the magnetic field  
 (c) at an angle of  $45^\circ$  to the magnetic field  
 (d) at an angle of  $60^\circ$  to the magnetic field

Ans. Option (a) is correct.

*Explanation:*  $F = Bilsin \theta$

$\theta$  is the angle between the direction of current and the direction of magnetic field.

So, when  $\theta = 90^\circ$ , the force is maximum.

21. The voltage across a resistor, an inductor, and a capacitor connected in series to an ac source are 20 V, 15 V and 30 V respectively. The resultant voltage in the circuit is

- (a) 5 V      (b) 20 V  
 (c) 25 V      (d) 65 V

Ans. Option (d) is correct.

*Explanation:* Resultant voltage in the circuit is the algebraic sum of all the voltages *i.e.*

$$20 \text{ V} + 15 \text{ V} + 30 \text{ V} = 65 \text{ V}$$

22. In a dc circuit the direction of current inside the battery and outside the battery respectively are:

- (a) positive to negative terminal and negative to positive terminal  
 (b) positive to negative terminal and positive to negative terminal  
 (c) negative to positive terminal and positive to negative terminal  
 (d) negative to positive terminal and negative to positive terminal

Ans. Option (c) is correct.

*Explanation:* The direction of an electric current is by convention the direction in which a positive charge would move. Thus, the current in the external circuit is directed from positive terminal and to negative terminal of the battery.

When the battery is giving power it discharges, then the current inside the cell flows from negative terminal to positive terminal.

23. The magnitude of electric field due to a point charge  $2q$ , at distance  $r$  is  $E$ . Then the magnitude of electric field due to a uniformly charged thin spherical shell of radius  $R$  with total charge  $q$  at a

distance  $\frac{r}{2}$  ( $r \gg R$ ) will be

- (a)  $\frac{E}{4}$       (b) 0  
 (c)  $2E$       (d)  $4E$

Ans. Option (c) is correct.

*Explanation:* Electric field due to the point charge

$$= E = \frac{K \times 2q}{r^2}$$

Electric field due to the spherical shell

$$= E' = \frac{K \times q}{(r/2)^2} = 2E$$

24. The horizontal component of earth's magnetic field at a place is 0.2 G whereas its total magnetic field is 0.4 G. The angle of dip at the place is

- (a)  $30^\circ$       (b)  $45^\circ$   
 (c)  $60^\circ$       (d)  $90^\circ$

Ans. Option (c) is correct.

*Explanation:*  $\cos \phi = B_H/B = 0.2/0.4 = 1/2$

$$\therefore \text{Angle of dip} = \phi = 60^\circ$$

25. The current in the primary coil of a pair of coils changes from 7 A to 3 A in 0.4 s. The mutual inductance between the two coils is 0.5 H. The induced emf in the secondary coil is:

- (a) 50 V      (b) 75 V  
 (c) 100 V      (d) 220 V

Ans. Option (a) is correct.

*Explanation:* Induced emf =  $|\mathcal{E}| = M \frac{di}{dt}$

$$= 0.5 \times (4/0.04)$$

$$= 50 \text{ V}$$

## SECTION - B

26. A square sheet of side 'a' is lying parallel to XY plane at  $z = a$ . The electric field in the region is

$\vec{E} = cz^2 \hat{k}$ . The electric flux through the sheet is

- (a)  $a^4 c$       (b)  $\frac{1}{3} a^3 c$   
 (c)  $\frac{1}{3} a^4 c$       (d) 0



or,  $mg = iLB$   
 $\therefore i = \frac{mg}{LB}$

To remove the tension,

or,  $T = F_{mag}$   
 $mg = iLB$   
 $\therefore i = \frac{mg}{LB}$

31. A constant current is flowing through a solenoid. An iron rod is inserted in the solenoid along its axis. Which of the following quantities will not increase?

- (a) The magnetic field at the centre
- (b) The magnetic flux linked with the solenoid
- (c) The rate of heating
- (d) The self-inductance of the solenoid

Ans. Option (c) is correct.

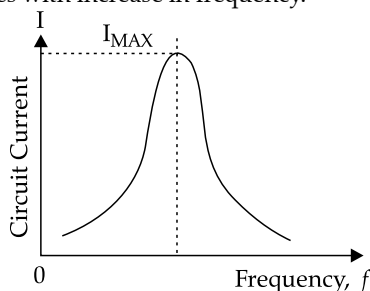
*Explanation:* Since the current remains constant, the rate of heating will not increase.

32. A circuit is connected to an ac source of variable frequency. As the frequency of the source is increased, the current first increases and then decreases. Which of the following combinations of elements is likely to comprise the circuit?

- (a) L, C and R
- (b) L and C
- (c) L and R
- (d) R and C

Ans. Option (a) is correct.

*Explanation:* The frequency vs. circuit current graph in a series LCR circuit is as follows, where current initially increases, reaches a maximum and then decreases with increase in frequency.



Hence, the circuit contains a combination of L, R and C.

33. If  $n$ ,  $e$ ,  $\tau$  and  $m$  have their usual meanings, then the resistance of a wire of length  $l$  and cross-sectional area  $A$  is given by:

- (a)  $\frac{ne^2A}{2m\tau l}$
- (b)  $\frac{ml}{ne^2\tau A}$
- (c)  $\frac{m\tau A}{ne^2l}$
- (d)  $\frac{ne^2\tau A}{2ml}$

Ans. Option (b) is correct.

*Explanation:* Drift velocity  $= v_d = \frac{eV\tau}{ml}$  ... (i)

Current  $= I = enAv_d$  ... (ii)

Using equations (i) and (ii)

$$\frac{V}{I} = \frac{ml}{ne^2\tau A}$$

When  $m, l, n, e, \tau, A$  are constant then

$$\frac{V}{I} = R = \frac{ml}{ne^2\tau A}$$

34. A proton and an alpha particle move in circular orbits in a uniform magnetic field. Their speeds are in the ratio of 9 : 4. The ratio of radii of their circular

orbits  $\left(\frac{r_p}{r_\alpha}\right)$  is

- (a)  $\frac{3}{4}$
- (b)  $\frac{4}{3}$
- (c)  $\frac{8}{9}$
- (d)  $\frac{9}{8}$

Ans. Option (d) is correct.

*Explanation:*  $r = \frac{mV}{qB}$

For proton,  $r_p = \frac{mV_p}{qB}$

For alpha particle,

$$r_\alpha = \frac{4mV_\alpha}{2qB} = \frac{2mV_\alpha}{qB}$$

$$\therefore \frac{r_p}{r_\alpha} = \frac{V_p}{2V_\alpha} = \frac{1}{2} \times \left(\frac{9}{4}\right) = \frac{9}{8}$$

35. A coil of area  $100 \text{ cm}^2$  is kept at an angle of  $30^\circ$  with a magnetic field of  $10^{-1} \text{ T}$ . The magnetic field is reduced to zero in  $10^{-4} \text{ s}$ . The induced emf in the coil is:

- (a)  $5\sqrt{3} \text{ V}$
- (b)  $50\sqrt{3} \text{ V}$
- (c)  $5.0 \text{ V}$
- (d)  $50.0 \text{ V}$

Ans. Option (a) is correct.

*Explanation:* Flux through the coil  $\phi = BA \cos \theta$   
 or,  $\phi = 10^{-1} \times (100 \times 10^{-4}) \times \cos 30^\circ$

$$\therefore \phi = 10^{-3} \times \frac{\sqrt{3}}{2} \text{ Wb}$$

Induced emf  $= \epsilon = \frac{-d\phi}{dt} = \frac{-(\phi_f - \phi_i)}{\Delta t}$

$$= \frac{-\left(0 - 10^{-3} \times \frac{\sqrt{3}}{2}\right)}{10^{-4}}$$

$$= 5\sqrt{3} \text{ V}$$

36. A  $15 \Omega$  resistor, an  $80 \text{ mH}$  inductor and a capacitor of capacitance  $C$  are connected in series with a  $50 \text{ Hz}$  ac source. If the source voltage and current in the circuit are in phase, then the value of capacitance is

- (a)  $100 \mu\text{F}$
- (b)  $127 \mu\text{F}$
- (c)  $142 \mu\text{F}$
- (d)  $160 \mu\text{F}$

Ans. Option (b) is correct.

Explanation: Voltage and current will be in phase when  $X_C = X_L$

Or,  $1/\omega C = \omega L$

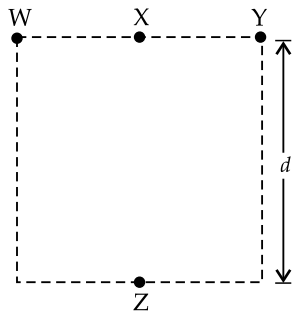
Or,  $1/2\pi f C = 2\pi f L$

Or,  $C = 1/4\pi^2 f^2 L$

Or,  $C = \frac{1}{4 \times (3.14)^2 \times (50)^2 \times 80 \times 10^{-3}}$

$\therefore C = 127 \mu\text{F}$

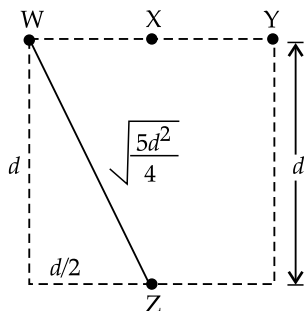
37. Four objects W, X, Y and Z, each with charge +q are held fixed at four points of a square of side d as shown in the figure. Objects X and Z are on the midpoints of the sides of the square. The electrostatic force exerted by object W on object X is F. Then the magnitude of the force exerted by object W on Z is



- (a)  $\frac{F}{7}$
- (b)  $\frac{F}{5}$
- (c)  $\frac{F}{3}$
- (d)  $\frac{F}{2}$

Ans. Option (b) is correct.

Explanation: Force on X by W is  $F = \frac{kq^2}{(d/2)^2} = \frac{4kq^2}{d^2}$



$WZ = \sqrt{d^2 + (d/2)^2}$

$= \sqrt{\frac{5d^2}{4}}$

Force on Z by W is  $F' = \frac{kq^2}{\frac{5d^2}{4}}$

$= \frac{4kq^2}{5d^2}$

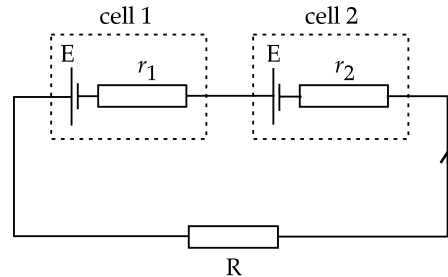
$= \frac{F}{5}$

38. Two sources of equal emf are connected in series. This combination is, in turn connected to an external resistance R. The internal resistance of two sources are  $r_1$  and  $r_2$  ( $r_2 > r_1$ ). If the potential difference across the source of internal resistance  $r_2$  is zero, then R equals to:

- (a)  $\frac{r_1 + r_2}{r_2 - r_1}$
- (b)  $r_2 - r_1$
- (c)  $\frac{r_1 r_2}{r_2 - r_1}$
- (d)  $\frac{r_1 + r_2}{r_1 r_2}$

Ans. Option (b) is correct.

Explanation:



Net emf =  $E_{net} = E + E = 2E$

Net resistance =  $R_{net} = R + r_1 + r_2$

Current in circuit =  $I = \frac{E_{net}}{R_{net}}$   
 $= \frac{2E}{(R + r_1 + r_2)}$

Since the potential difference of the cell of internal resistance  $r_2$  is 0,

$E - ir_2 = 0$

or,  $\frac{E - 2Er_2}{(R + r_1 + r_2)} = 0$

or,  $E = \frac{2Er_2}{(R + r_1 + r_2)}$

or,  $1 = \frac{2r_2}{(R + r_1 + r_2)}$

$\therefore R = r_2 - r_1$

39. Which of the following statements is correct?

- (a) Magnetic field lines do not form closed loops.
- (b) Magnetic field lines start from north pole and end at south pole of a magnet.
- (c) The tangent at a point on a magnetic field line represents the direction of the magnetic field at that point.
- (d) Two magnetic field lines may intersect each other.

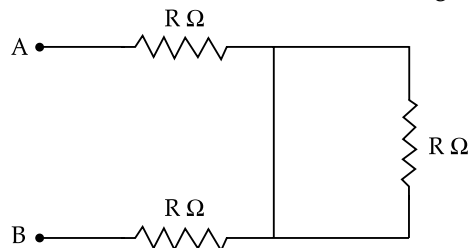
Ans. Option (c) is correct.

Explanation: Option (A) is wrong since magnetic field lines do form closed loop.

Option (B) is wrong since magnetic field lines do exist also from south pole to north pole inside the magnet.

Option (D) is wrong since two magnetic field lines never intersect each other.

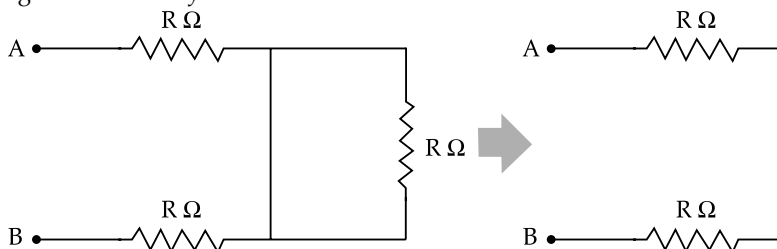
40. The equivalent resistance between A and B of the network shown in figure is



- (a)  $3R \Omega$                       (b)  $\left(\frac{3}{2}\right)R \Omega$                       (c)  $2R \Omega$                       (d)  $\left(\frac{2}{3}\right)R \Omega$

Ans. Option (c) is correct.

Explanation: The given circuit may be further reduced as:



So, the equivalent resistance is  $R + R = 2R \Omega$

41. A bar magnet has magnetic dipole moment  $\vec{M}$ . Its initial position is parallel to the direction of uniform magnetic field  $\vec{B}$ . In this position, the magnitudes of torque and force acting on it respectively are:

- (a) 0 and  $MB$                       (b)  $MB$  and  $MB$   
 (c) 0 and 0                          (d)  $|\vec{M} \times \vec{B}|$  and 0

Ans. Option (c) is correct.

Explanation: Torque =  $\tau = MB \sin \theta$

Since M and B are parallel, then  $\theta = 0$  and hence  $\tau = 0$ .

Torque is 0. So, in this case force is also zero since the distance is not equal to zero.

42. Two charges  $14 \mu\text{C}$  and  $-4 \mu\text{C}$  are placed at  $(-12\text{cm}, 0, 0)$  and  $(12\text{cm}, 0, 0)$  in an external electric field

$E = \left(\frac{B}{r^2}\right)$ , where  $B = 1.2 \times 10^6 \text{ N}/(\text{cm}^2)$  and  $r$  is

in metres. The electrostatic potential energy of the configuration is

- (a) 97.9 J                              (b) 102.1 J  
 (c) 2.1 J                                (d) -97.9 J

Ans. Option (a) is correct.

Explanation: Energy =  $q_1V + q_2V + kq_1q_2/r$   
 $E = B/r^2$

$$\therefore V = - \int \frac{B}{r^2} dr$$

$$= B/r = 1.2 \times 10^6/r$$

$$\text{Now, energy} = 14 \times 10^{-6} \times 1.2 \times 10^6/(12 \times 10^{-2}) - 4 \times 10^{-6} \times 1.2 \times 10^6/(12 \times 10^{-2}) - 9 \times 10^9 \times 14 \times 10^{-6} \times 4 \times 10^{-6}/(24 \times 10^{-2})$$

$$= (14 - 4) \times 1.2/(12 \times 10^{-2}) - 9 \times 56/240$$

$$= 100 - 2.1$$

$$= 97.9 \text{ J}$$

43. A  $300 \Omega$  resistor and a capacitor of  $\left(\frac{25}{\pi}\right) \mu\text{F}$  are

connected in series to a  $200 \text{ V} - 50 \text{ Hz}$  ac source. The current in the circuit is:

- (a) 0.1 A                              (b) 0.4 A  
 (c) 0.6 A                              (d) 0.8 A

Ans. Option (b) is correct.

Explanation:  $X_c = 1/2\pi fC$

$$\text{Or, } X_c = \frac{1}{2\pi \times 50 \times \frac{25}{\pi} \times 10^{-6}}$$

$$\therefore X_c = 400 \Omega$$

$$R = 300 \Omega$$

$$\therefore Z = \sqrt{R^2 + X_c^2}$$

$$= \sqrt{300^2 + 400^2}$$

$$= 500 \Omega$$

$$\therefore \text{Current} = V/Z = 200/500$$

$$= 0.4 \text{ A}$$

44. The core of a transformer is laminated to reduce the effect of

- (a) flux leakage                      (b) copper loss  
 (c) hysteresis loss                      (d) eddy current

Ans. Option (d) is correct.

Explanation: Transformer has 4 types of losses:

- (a) **Flux Leakage:** This loss is minimized by using a shell type core  
 (b) **Copper loss:** Thick wires with considerably low resistance are used to minimize this loss.  
 (c) **Hysteresis Loss:** This loss can be minimized by using a core with a material having the least hysteresis loss.



(d) **Eddy current loss:** This loss is minimized by using a laminated core. Hence this is the correct option.

**Question No. 45 to 49 are Assertion (a) and Reason (R) type questions. Given below are the two statements labelled as Assertion (a) and Reason (R). Select the most appropriate answer from the options given below as:**

- (a) Both (a) & are true and (R) is correct explanation of (a).
- (b) Both (a) & (R) are true, and (R) is not correct explanation of (a).
- (c) (a) is true, but (R) is false.
- (d) (a) is false and (R) is also false.

45. **Assertion (A): A negative charge in an electric field moves along the direction of the electric field.**  
**Reason (R): On a negative charge a force acts in the direction of the electric field.**

**Ans. Option (d) is correct.**

**Explanation:** Assertion is wrong since electron moves in opposite direction of the electric field.

Reason is also false since on negative charge force acts in the opposite direction of the electric field.

46. **Assertion (a): The poles of a bar magnet cannot be separated.**  
**Reason (R): Magnetic monopoles do not exist.**

**Ans. Option (a) is correct.**

**Explanation:** Assertion is true since poles of bar magnet cannot be separated.

The reason is also true since the magnetic monopoles do not exist. The reason explains the assertions properly.

47. **Assertion (A): When radius of a current carrying loop is doubled, its magnetic moment becomes four times.**

**Reason (R): The magnetic moment of a current carrying loop is directly proportional to the area of the loop.**

**Ans. Option (a) is correct.**

**Explanation:** Relation between current and magnetic moment of a current carrying loop is  $M = IA$

$$A = \pi R^2$$

So,  $M \propto R^2$

So, If the radius is doubled, the moment becomes four times. The assertion is true.

Since  $M = IA$ ,  $\therefore M \propto A$ . The reason is true. Also reason is the proper explanation of the assertion.

48. **Assertion (A): Higher the range, lower is the resistance of an ammeter.**

**Reason (R): To increase the range of an ammeter additional shunt is added in series to it.**

**Ans. Option (c) is correct.**

**Explanation:**  $R_{sh} = \frac{I_m R_m}{(I - I_m)}$ . So as range increases,

the value of ammeter resistance decreases. Assertion is true.

To increase the range, resistance is to be lowered and to lower the resistance shunt is to be connected on parallel. Reason is false.

49. **Assertion (A): A step-up transformer cannot be used as a step-down transformer.**

**Reason (R): A transformer works only in one direction.**

**Ans. Option (b) is correct.**

**Explanation:** Step-up transformer cannot be used as a step down transformer or vice versa. The assertion is true.

So, the transformer is a uni-directional device. The reason is also true. The reason is true. But the reason does not explain the assertion.

**SECTION - C**

50. **Equipotentials at a large distance from a collection of charges whose total sum is not zero are:**

- (a) spheres
- (b) planes
- (c) ellipsoids
- (d) paraboloids

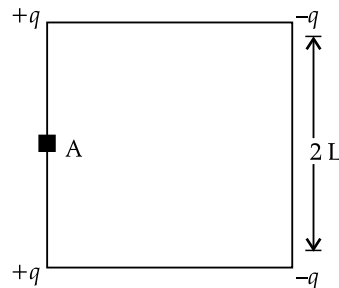
**Ans. Option (a) is correct.**

**Explanation:** The collection of charges, whose total sum is not zero, at great distance may be considered as a point charge.

So, potential is inversely proportional to the distance from the charge.

So, electric potentials due to point charge are the same for all equidistant points. The locus of these equidistant points, which are at same potential, is a sphere.

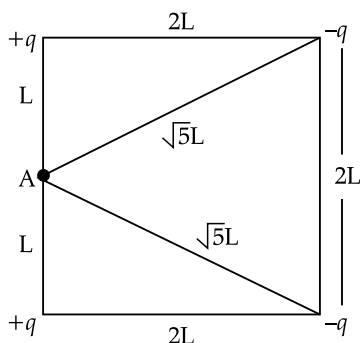
51. **Four charges  $-q, -q, +q$  and  $+q$  are placed at the corners of a square of side  $2L$  is shown in figure. The electric potential at point A midway between the two charges  $+q$  and  $+q$  is:**



- (a)  $\frac{1}{4\pi\epsilon_0} \frac{2q}{L} \left(1 - \frac{1}{\sqrt{5}}\right)$
- (b)  $\frac{1}{4\pi\epsilon_0} \frac{2q}{L} \left(1 + \frac{1}{\sqrt{5}}\right)$
- (c)  $\frac{1}{4\pi\epsilon_0} \frac{q}{2L} \left(1 - \frac{1}{\sqrt{5}}\right)$
- (d) zero

Ans. Option (a) is correct.

Explanation:



Electric potential due to two +q charges

$$= \frac{1}{4\pi\epsilon_0} \times \frac{2q}{L}$$

Electric potential due to two -q charges

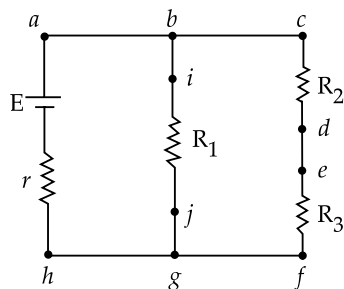
$$= \frac{1}{4\pi\epsilon_0} \times \frac{-2q}{\sqrt{5}L}$$

$$\text{Total potential at A} = \frac{1}{4\pi\epsilon_0} \times \frac{2q}{L} \left( 1 - \frac{1}{\sqrt{5}} \right)$$

Case Study

An experiment was set up with the circuit diagram shown in figure.

Given that  $R_1 = 10 \Omega$ ,  $R_2 = R_3 = 5 \Omega$ ,  $r = 0 \Omega$  and  $E = 5 \text{ V}$ .



52. The points with the same potential are:

- (a) b, c, d                      (b) f, h, j  
(c) d, e, f                      (d) a, b, j

Ans. Option (b) is correct.

Explanation: Points h, g, f, j are at same potential. Say  $V_1$ .

a, b, c, i are at same potential. Say  $V_2$ .

d, e are at same potential. Say  $V_3$ .

In option (A): b, c are at  $V_2$  but d at  $V_3$ . So, this option is not correct.

In option (B): f, h, j are at  $V_1$ . So, this option is correct.

In option (C): d, e are at  $V_3$  but f is at  $V_1$ . So, this option is not correct.

In option (D): a, b are at  $V_2$  but j is at  $V_1$ . So, this option is not correct.

53. The current through branch bg is:

- (a) 1 A                              (b)  $\frac{1}{3}$  A  
(c)  $\frac{1}{2}$  A                              (d)  $\frac{2}{3}$  A

Ans. Option (c) is correct.

Explanation: Current through bg branch =  $\frac{E}{R_1}$

$$= \frac{5}{10} = \frac{1}{2} \text{ A}$$

54. The power dissipated in  $R_1$  is:

- (a) 2 W                              (b) 2.5 W  
(c) 3 W                              (d) 4.5 W

Ans. Option (b) is correct.

Explanation: Power =  $I^2 R_1 = (1/2)^2 \times 10 = 2.5 \text{ W}$

55. The potential difference across  $R_3$  is:

- (a) 1.5 V                              (b) 2 V  
(c) 2.5 V                              (d) 3 V

Ans. Option (c) is correct.

Explanation: Current through cf arm =  $E/(R_2 + R_3)$   
 $= 5/10 = 0.5 \text{ A}$

So, the potential difference across  $R_3$  is  $IR_3$   
 $= 0.5 \times 5 = 2.5 \text{ V}$

