

Time Allowed : 2 Hours

M.M. : 100

Important Instructions :

1. This Test Booklet contains **120** items (questions). Each item comprises four responses (answers). You will select the response which you want to mark on the Answer Sheet. In case you feel that there is more than one correct response, mark the response which you consider the best. In any case, choose **ONLY ONE** response for each item.
2. You have to mark all your responses **ONLY** on the separate Answer Sheet provided. See directions in the Answer Sheet.
3. All items carry equal marks.
4. **Penalty for wrong answers :**
THERE WILL BE PENALTY FOR WRONG ANSWERS MARKED BY A CANDIDATE IN THE OBJECTIVE TYPE QUESTION PAPERS.
 - (i) There are four alternatives for the answer to every question. For each question for which a wrong answer has been given by the candidate, **one-third** of the marks assigned to that question will be deducted as penalty.
 - (ii) If a candidate gives more than one answer, it will be treated as a **wrong answer** even if one of the given answers happens to be correct and there will be same penalty as above to that question.
 - (iii) If a question is left blank, i.e., no answer is given by the candidate, there will be **no penalty** for that question.

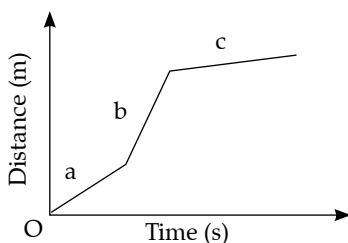
1. A person can see near objects clearly through his eyes but **cannot** see distant objects clearly. The possible reason(s) for this defect could be:

1. Excessive curvature of the eye lens.
2. The eye-ball has become too small.
3. The focal length of the eye lens is too large.
4. Elongation of the eye-ball.

Select the correct answer using the code given below:

- (a) 1 only (b) 2 and 4 only
(c) 1 and 4 only (d) 1 and 3 only

2. Consider a journey by a car represented by the graph given below in three parts A, B and C. The speed of the car in these parts is v_a , v_b and v_c respectively:



Which one of the following is correct in this case?

- (a) $v_a < v_b < v_c$ (b) $v_b > v_a > v_c$
(c) $v_0 = v_b = v_c$ (d) $v_a > v_b ; v_a > v_c$

3. A concave mirror of radius of curvature 50 cm is used to form an image of an object kept at a

distance of 25 cm from the mirror on its principal axis. What will be the position of the image from the mirror?

- (a) At infinity (b) At 50 cm
(c) At 25 cm (d) At 75 cm

4. If the Moon is brought closer to the Earth such that its distance from the Earth becomes half of the original distance, then the gravitational force of attraction between the Earth and the Moon would:

- (a) reduce to half of its original value.
(b) increase to two times of its original value.
(c) remain the same as the original value.
(d) increase to four times of its original value.

5. Sonic boom is produced when a source of sound travels at a speed :

- (a) greater than the speed of sound.
(b) greater than the speed of light.
(c) lesser than the speed of sound.
(d) equal to the speed of sound.

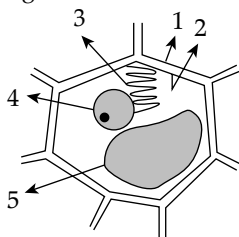
6. Which one among the following are the correct symbols for the elements gold, tin and lead, respectively?

- (a) Ga, Sb, Pb (b) At, Sn, Le
(c) Au, Sn, Pb (d) Au, Sb, Pb

7. How much percentage of carbon dioxide is present in the atmosphere of Venus and Mars?

- (a) 45 - 47% (b) 52 - 55%
(c) 74 - 77% (d) 95 - 97%

8. Which among the following methods is used to separate the constituents present in a compound?
- Electrochemical method
 - Heating method
 - Fractional distillation
 - Decomposition followed by ion exchange
9. During white-washing of walls, slaked lime reacts slowly with carbon dioxide in air to form a thin layer of calcium carbonate on the walls. Which of the following reactions represents this correctly?
- $\text{CaO(s)} + \text{CO}_2\text{(g)} \rightarrow \text{CaCO}_3\text{(s)}$
 - $\text{CaO(l)} + \text{CO}_2\text{(g)} \rightarrow \text{CaCO}_3\text{(s)}$
 - $\text{Ca(OH)}_2\text{(l)} + \text{CO}_2\text{(l)} \rightarrow \text{CaCO}_3\text{(s)} + \text{H}_2\text{O(l)}$
 - $\text{Ca(OH)}_2\text{(aq)} + \text{CO}_2\text{(g)} \rightarrow \text{CaCO}_3\text{(s)} + \text{H}_2\text{O(l)}$
10. Which one of the following equations is the balanced chemical equation for the given reaction?
- $$\text{Fe} + \text{H}_2\text{O} \rightarrow \text{Fe}_3\text{O}_4 + \text{H}_2$$
- $\text{Fe} + 4\text{H}_2\text{O} \rightarrow \text{Fe}_3\text{O}_4 + \text{H}_2$
 - $3\text{Fe} + \text{H}_2\text{O} \rightarrow \text{Fe}_3\text{O}_4 + 2\text{H}_2$
 - $3\text{Fe} + 4\text{H}_2\text{O} \rightarrow \text{Fe}_3\text{O}_4 + 4\text{H}_2$
 - $3\text{Fe} + 4\text{H}_2\text{O} \rightarrow \text{Fe}_3\text{O}_4 + \text{H}_2$
11. The term Phyllotaxy refers to the pattern of :
- arrangement of leaves.
 - branching in stem.
 - flower formation on branch.
 - arrangement of flowers.
12. Chromosomes are composed of DNA and :
- lipids
 - vitamins
 - proteins
 - carbohydrates
13. Bacteria have an undefined nuclear region which lacks a nuclear membrane and contains only DNA without proteins. Such a region is called:
- Nucleosome
 - Nucleus
 - Nucleoprotein
 - Nucleoid
14. In the following simplified diagram of a plant cell, five parts/organelles are marked from 1 to 5:



Which one of the following correctly represents the above parts/organelles?

- 1 - cell membrane; 2 - cell wall;
3 - vacuole; 4 - endoplasmic reticulum;
5 - nucleus
 - 1 - cell wall; 2 - cell membrane;
3 - endoplasmic reticulum; 4 - vacuole;
5 - nucleus
 - 1 - cell wall; 2 - cell membrane;
3 - endoplasmic reticulum; 4 - nucleus;
5 - vacuole
 - 1 - cell wall; 2 - cell membrane;
3 - vacuole; 4 - endoplasmic reticulum;
5 - nucleus
15. Which one of the following is the language of the famous political treatise Amuktamalyada?
- Sanskrit
 - Tamil
 - Kannada
 - Telugu
16. Which one of the following statements about the Shvetambara Sect of Jainism is **not** correct?
- It refers to monks, who wear white clothes.
 - It refers to monks, who migrated to the south of Vindhyas in 4th century BCE.
 - They recognized the existence of canonical texts including the 12 Angas.
 - They believed that women can also attain salvation.
17. Where is the Vikramkhoh Cave located?
- Odisha
 - Bihar
 - Telangana
 - West Bengal
18. Consider the following statements regarding the 'Levallois Technique' :
- It refers to making perforated Harappa pottery.
 - It refers to making prehistoric flake tools.
- Which of the statements given above is/are correct?
- 1 only
 - 2 only
 - Both 1 and 2
 - Neither 1 nor 2
19. Which of the following statements is/are correct?
- The Bakshali Manuscript written in the Gatha language (a refined version of old Prakrit) using the Sharada script deals with topics such as fractions, square roots, arithmetic and geometric progressions.
 - In the field of geometry, Aryabhatta described the various properties of a circle giving a very accurate value for pi (π) correct to four decimal places at 3.1416.
 - Sharangadhara Samhita is an important text on political system of ancient India.
- Select the correct answer using the code given below :
- 1,2 and 3
 - 1 and 3 only
 - 1 and 2 only
 - 2 only
20. Which one of the following is **not** correct about the Indian Independence Act, 1947?
- The Bill for the Indian Independence Act was introduced in Parliament on July 4 and received the Royal Assent on July 18, 1947.
 - Act of 1947 laid down the basic framework of the Indian Constitution.
 - The Act provided for the establishment of two independent Dominions to be known as India and Pakistan.
 - The Act empowered the Constituent Assembly of each Dominion to have unlimited power to frame and adopt any constitution.

21. As per the Cabinet Resolution of 1st January, 24, 2015, the NITI Aayog consists of:
1. Prime Minister of India
 2. Governing Council comprising of Chief Minister of all the States and Lieutenant Governors of Union Territories
 3. Rural Development Minister
 4. Chief Executive Officer to be appointed by the Prime Minister

Select the correct answer using the code given below:

- (a) 1, 2 and 3 (b) 1, 2 and 4
(c) 1 and 2 only (d) 3 and 4 only
22. The executive is given an advance grant to meet temporary and running requirements of Government of India in the beginning of the new financial year until the demands are voted by the legislature. This is known as :
- (a) Vote of Credit (b) Vote on Account
(c) Appropriation Bill (d) Advance Account

23. Which of the following is/are United Nations Sustainable Development Goal(s)?

1. Decent work and economic growth
2. Peace, justice and strong institutions
3. Responsible consumption and production

Select the correct answer using the code given below:

- (a) 1 and 2 only (b) 1, 2 and 3
(c) 2 only (d) 1 and 3 only
24. Consider the following statements on 'Fog' :

1. Fog is simply a cloud that forms close to the ground.
2. Radiation fog is associated with radiation cooling of the land at night.
3. Advection fog forms when moisture is blown over a cold surface and is chilled by contact.

Which of the statements given above are correct?

- (a) 1 and 2 only (b) 2 and 3 only
(c) 1 and 3 only (d) 1, 2 and 3
25. Which one of the following landforms is/are formed by wind erosion?
- (a) Cirque (b) Stack
(c) Zeugen (d) Stack and Zeugen both
26. Which one of the following crops is **not** cultivated under dryland farming?
- (a) Jowar (b) Ragi
(c) Sugarcane (d) Groundnut
27. Which one of the following forms of settlement develops around a lake?
- (a) Linear (b) Cross-shaped
(c) Circular (d) Square

28. How can resources be classified on the basis of their origin?

- (a) Biotic and abiotic
(b) Renewable and non-renewable
(c) Individual and community
(d) Potential and reserve

29. Which one among the following is the highest mountain in Africa?

- (a) Atlas Mountain (b) Mount Kilimanjaro
(c) Mount Kenya (d) Mount Elgon

30. Which of the following action(s) by the Government would lead to contraction of money supply in the economy?

1. Purchase of Treasury Bills by the central bank from public
2. Sale of Treasury Bills by the central bank to public
3. Sale of foreign exchange by the central bank
4. Purchase of foreign exchange by the central bank

Select the correct answer using the code given below:

- (a) 1 and 4 only (b) 1 and 3 only
(c) 2 and 3 only (d) 2 only
31. Which of the following are included In the definition of Narrow Money ?

1. Currency with the public
2. Demand deposits
3. 'Other' deposits with Reserve Bank of India
4. Banker's deposits with Reserve Bank of India

Select the correct answer using the code given below:

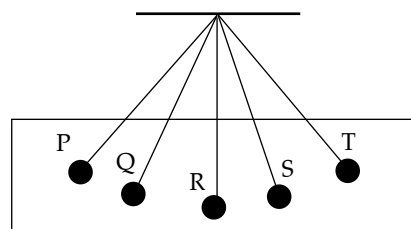
- (a) 1, 2 and 4 (b) 1 and 2 only
(c) 1, 2 and 3 (d) 3 and 4 only
32. Which of the following is/are the effects of devaluation or depreciation of currency?

1. It leads to increase in imports and decrease in exports.
2. It leads to increase in exports and decrease in imports.
3. It leads to increase in domestic inflation.
4. It leads to decrease in domestic inflation.

Select the correct answer using the code given below:

- (a) 1 and 3 only (b) 1 and 4 only
(c) 2 and 3 only (d) 3 only
33. Which one of the following taxes is **not** subsumed under the Goods and Services Tax in India?
- (a) Customs Duties (b) Central Excise Duties
(c) Service Tax
(d) Taxes on Petroleum and Petroleum Products

34. The following diagram shows a pendulum at different positions. Which one of the following statement is true?



- (a) The pendulum has minimum potential energy at positions P and T.
 (b) The pendulum has minimum potential energy at positions Q and S.
 (c) The pendulum has minimum potential energy at position R.
 (d) The pendulum has same potential energy at all positions.
35. In which of the following media is the speed of sound the maximum?
 (a) Glass (b) Stainless steel
 (c) Water (d) Oxygen
36. A charged particle moves through a magnetic field **B** with a velocity **v**. Which one of the following statements is true for the force (**F**) experienced by the particle?
 (a) **F** is 'maximum when **v** and **B** are parallel to each other.
 (b) **F** is maximum when **v** and **B** are anti-parallel to each other.
 (c) **F** is maximum when **v** and **B** are perpendicular to each other.
 (d) The force **F** is independent of the angle between **v** and **B**.
37. Which one of the following is the correct relation between Celsius and Fahrenheit temperature scales? (Symbols carry their usual meanings)
 (a) $T_F = \frac{10}{3} T_C + 32$ (b) $T_F = \frac{5}{9} T_C + 36$
 (c) $T_F = \frac{9}{5} T_C + 36$ (d) $T_F = \frac{9}{5} T_C + 32$
38. Which one of the following statements is correct regarding the travel of a light beam from a rare to a dense medium?
 (a) A light beam travelling from a rare medium to a dense medium slows down and bends towards the normal.
 (b) A light beam travelling from a rare medium to a dense medium speeds up and bends towards the normal.
 (c) A light beam travelling from a rare medium to a dense medium slows 'down and bends away from the normal.
 (d) A light beam travelling from a rare medium to a dense medium speeds up and bends away from the normal.
39. In which one of the following cases do both physical and chemical changes take place?
 (a) Burning of candle (b) Freezing of water
 (c) Cooking of food (d) Rusting of iron
40. Which one of the following statements is correct about diamond and graphite?
 (a) Diamond and graphite have similar physical and chemical properties.
 (b) Diamond is hard but graphite is smooth and slippery.
 (c) Diamond and graphite are both non-conductors of electricity.
 (d) Both diamond and graphite have similar structures.
41. Which one among the following substances is a compound?
 (a) Sugar (b) Air
 (c) Milk (d) Tea
42. What is the total number of naturally occurring elements?
 (a) 114 (b) 94
 (c) 86 (d) 82
43. Which one of the following statements regarding acids is **not** correct?
 (a) Hydrochloric acid is present in the gastric juice secreted by the stomach.
 (b) Acetic acid is the main constituent of vinegar.
 (c) Oxalic acid is found in tamarind paste.
 (d) Lemon and orange juices contain citric acid and ascorbic acid respectively.
44. Which one of the following is the correct combination of organelles and their functions?
 (a) Mitochondria – Respiration; Chloroplast – Photosynthesis; Ribosome – Protein Synthesis; Rough endoplasmic reticulum – Transport of proteins
 (b) Mitochondria – Respiration; Chloroplast – Photosynthesis; Ribosome – Transport of proteins; Rough endoplasmic reticulum – Protein synthesis
 (c) Mitochondria – Respiration; Chloroplast – Protein synthesis; Ribosome – Photosynthesis; Rough endoplasmic reticulum – Transport of proteins
 (d) Mitochondria – Photosynthesis; Chloroplast – Respiration; Ribosome – Protein synthesis; Rough endoplasmic reticulum – Transport of proteins
45. Cell wall is absent in which one of the following organisms?
 (a) Bacteria (b) Diatom
 (c) Mushroom (d) Tapeworm
46. Water goes up through xylem vessels in tall trees. The process in plants and properties of water that help in upward movement are:
 (a) Respiration and cohesion
 (b) Transpiration pull, cohesion and adhesion
 (c) Root pressure, cohesion and adhesion
 (d) Transpiration and adhesion
47. Energy and nutrients flow from one trophic level to another in an ecosystem. Which one of the following statements correctly describes the direction of flow of energy and nutrients in an ecosystem?
 (a) Energy flow is cyclic and nutrient flow is unidirectional.

- (b) Energy flow is unidirectional and nutrient flow is cyclic.
 (c) Both energy and nutrient flow are unidirectional.
 (d) Both energy and nutrient flow are cyclic.
48. Which one of the following is a saprophyte?
 (a) *Cuscuta* (b) *Rhizopus*
 (c) *Spirogyra* (d) Grass
49. In ovules of Angiosperms, which one of the following is **not** a haploid cell?
 (a) Nucellus (b) Synergid
 (c) Egg (d) Antipodal
50. Arrange the following events associated with Shivaji in chronological order:
 1. Attack on Afzal Khan
 2. Capture of Torna
 3. Attack on Shaista Khan
 4. Annexation of Javli
 Select the correct answer using the code given below:
 (a) 2, 4, 1, 3 (b) 4, 2, 1, 3
 (c) 1, 2, 3, 4 (d) 3, 1, 2, 4
51. Who among the following is the author of the book '*The Indian Struggle 1920–1942*'?
 (a) Vinayak Damodar Savarkar
 (b) Subhas Chandra Bose
 (c) Vallabhbhai Patel
 (d) Sarat Chandra Bose
52. Who among the following is **not** a woman Nayanar saint?
 (a) Karaikkal Ammaiyar
 (b) Mangayarkkarasiyar
 (c) Andal
 (d) Isaiganiyar
53. Which one of the following pairs of terms and their meanings is **not** correctly matched?
 (a) Nagarakkani : Land owned by the Nagaram
 (b) Nattar : Male serpent deity
 (c) Yupa : Sacrificial post
 (d) Viragal : 'Hero stone' in the Tamil Nadu area
54. Where is the famous Gupta period Deogarh Temple situated?
 (a) Uttar Pradesh (b) Madhya Pradesh
 (c) Chhattisgarh (d) Rajasthan
55. Consider the following statements with reference to the Nataraj bronze sculpture of Chola period:
 1. Shiva is shown balancing himself on his right leg representing *tirobhava*.
 2. Shiva is shown raising his left leg in *bhujangatrasta* stance, representing kicking away the illusion from the devotee's mind.
 3. The main right hand holds the damru, Shiva's favourite musical instrument.

Which of the statements given above is/are correct?

- (a) 1 only (b) 2 only
 (c) 2 and 3 only (d) 1, 2 and 3
56. Which of the following statements about ASEAN are correct?
 1. The Chairmanship of ASEAN rotates annually based on the alphabetical order of the English names of Member States.
 2. The Chairmanship is decided by voting among the Member States.
 3. "One Vision, One Identity, One Community" is the ASEAN motto.
 4. 12th August is celebrated as ASEAN Day.
 Select the correct answer using the code given below:
 (a) 1 and 2 only (b) 1 and 3 only
 (c) 3 and 4 only (d) 1, 2, 3 and 4
57. Consider the following statements about the Public Distribution System :
 1. The Public Distribution System is operated under the joint responsibility of Centre and State/Union Territories.
 2. Food Corporation of India has assumed the responsibility for procurement, storage and transportation of food grains to the State Governments.
 3. Both Centre and State have the joint responsibility to identify eligible beneficiaries.
 4. Some States also distribute additional items of mass consumption through the PDS outlets such as pulses, edible oil, etc.
 Which of the statements given above are correct?
 (a) 2 and 3 only (b) 1, 2 and 4
 (c) 1 and 2 only (d) 3 and 4 only
58. Which of the following concepts are considered as pillars of Human Development?
 1. Equity
 2. Sustainability
 3. Productivity
 4. Security
 Select the correct answer using the code given below:
 (a) 1 and 2 only (b) 3 and 4 only
 (c) 1, 2 and 3 only (d) 1, 2, 3 and 4
59. Which one of the following pairs of events and years is **not** correctly matched?
 (a) Launch of the first communications satellite : 1962
 (b) Completion of a continuous around the world fibre-optic cable link : 1997
 (c) Creation of the SWIFT system for worldwide electronic interbank fund transfer : 1977
 (d) Introduction of the World Wide Web (www) : 1995

60. Identify the type of soil on the basis of given characteristics :
1. They contain a large proportion of sodium, potassium and magnesium, and thus, they are infertile.
 2. Their structure ranges from sandy to loamy.
 3. They are more widespread in western Gujarat, deltas of the eastern coast and in Sunderban areas of West Bengal.
- (a) Peaty soil (b) Laterite soil
(c) Arid soil (d) Saline soil
61. Which one among the following State capitals is closest to the Equator?
- (a) Hyderabad (b) Bhubaneswar
(c) Panaji (d) Mumbai
62. Which is the only country in the world to officially proclaim the Gross National Happiness (GNH) as the measure of the country's progress?
- (a) Finland (b) Bhutan
(c) Nepal (d) Switzerland
63. Consider the following statements about clouds:
1. Two major forms of clouds are stratiform and cumuliform.
 2. According to the altitude, clouds are classified as high clouds, middle clouds and low clouds.
 3. Stratus, nimbostratus and stratocumulus are types of high clouds.
 4. Clouds having nimbo attached to their name produce precipitation.
- Which of the statements given above are correct?
- (a) 1 and 2 only (b) 1, 2 and 4
(c) 2 and 4 only (d) 1, 3 and 4
64. Which one of the following expenditures is subtracted from Fiscal Deficit to arrive at Primary Deficit?
- (a) Defence expenditure
(b) Expenditure on subsidies
(c) Interest payments
(d) Pension
65. The Wholesale Price Inflation has increased in India during 2021–2022 due to which of the following factors?
1. Sharp increase in international prices of crude oil
 2. Decrease in economic activity post-Covid
 3. Disruption of global supply chain
 4. High freight cost
- Select the correct answer using the code given below:
- (a) 2 and 3 only (b) 1, 3 and 4
(c) 1 and 2 only (d) 1 and 4 only
66. What would be the impact on the economy if people start holding more currency in hand and less in deposits?
- (a) Money demand will increase
(b) Money multiplier will decrease
(c) Money multiplier will increase
(d) Money demand will decrease
67. SDG India Index, developed by NITI Aayog, includes 17 SDGs for each State. Which one of the following is **not** included in that index?
- (a) Zero hunger
(b) Reduced unemployment
(c) Life below water
(d) Responsible consumption and production
68. Other things remaining constant, the market supply for a good increases if:
1. its price increases.
 2. price of its factors of production decreases.
 3. price of other goods decreases.
- Select the correct answer using the code given below:
- (a) 1 and 2 only (b) 1 and 3 only
(c) 2 and 3 only (d) 1, 2 and 3
69. Consider the following statements regarding poverty in India:
1. While determining poverty line in India, a minimum level of food requirement, clothing, footwear, fuel and light, educational and medical requirements, etc. are determined for subsistence.
 2. The accepted average calorie requirement in India is 2400 calories per person per day in rural areas and 2100 calories per person per day in urban areas.
- Which of the statements given above is/are correct?
- (a) 1 only (b) 2 only
(c) Both 1 and 2 (d) Neither 1 nor 2
70. Which of the following statements is/are correct?
1. Shivaji sent an ambassador to Bombay to negotiate an agreement with the English.
 2. His chief motive was to secure English aid against the Siddis of Danda-Rajpuri.
 3. He wanted a supply of grenades, mortars and other ammunition.
- Select the correct answer using the code given below:
- (a) 1 only (b) 1 and 3 only
(c) 2 and 3 only (d) 1, 2 and 3
71. The famous Hathigumpha inscription of Kharavela mentions that in the eleventh year of his reign, Kharavela destroyed a confederacy of Tamil States, "Tramiradesa Sanghatam", which had long been a source of danger. How old was this confederacy of Tamil States at that time?
- (a) 110 years old (b) 111 years old
(c) 112 years old (d) 113 years old
72. Which of the following statements about the Vaishnava saint of Assam, Shankardeva, is/are correct?
1. His teachings are often known as the Bhagavati dharma.

2. He encouraged the establishment of satras or monasteries and namghars or prayer halls for the transmission of spiritual knowledge.
3. His major compositions include the Kirtana-ghosha.
- Select the correct answer using the code given below:
- (a) 1 and 2 only (b) 2 and 3 only
(c) 1, 2 and 3 (d) 3 only
73. Abdur Razzaq, an ambassador of the ruler of Persia, was sent to Calicut in the fifteenth century. He was greatly impressed by the:
- (a) Fortifications of Calicut
(b) Climatic conditions of the coastal town
(c) High quality spices of the place
(d) Musical traditions of the place
74. Which of the following statements about the 'Race to Zero Campaign' is/are correct?
- One of the main objectives of the Race to Zero Campaign is to build momentum around the shift to a decarbonized economy.
 - It is related to the theory of Zero-Sum Game.
- Select the correct answer using the code given below:
- (a) 1 only (b) 2 only
(c) Both 1 and 2 (d) Neither 1 nor 2
75. Which of the following statements about National Action Plan on Climate Change (NAPCC) with reference to India is/are correct?
- It emphasises that maintaining a high growth rate is essential for raising the living standards of the vast majority of the people of India and reducing their vulnerability to the impact of climate change.
 - It was released in 2014.
- Select the correct answer using the code given below:
- (a) 1 only (b) 2 only
(c) Both 1 and 2 (d) Neither 1 nor 2
76. What does India's "Blue growth" refer to?
- (a) Upgradation of Indian Air Force
(b) Discouraging farmers from using pesticides
(c) A long-term strategy to support sustainable growth in the marine and maritime sectors
(d) Socio-economic empowerment of India's blue collar workers in the unorganized sector
77. Which of the following statements about 'Operation Sadbhavana' in Ladakh is/are correct? .
- Indian Army undertakes welfare activities, such as running of Army Goodwill Schools in remote areas of Ladakh.
 - It aims at building harmonious relationships between religious communities in Ladakh.
- Select the correct answer using the code given below:
- (a) 1 only (b) 2 only
(c) Both 1 and 2 (d) Neither 1 nor 2
78. Which one of the following is **not** a permanent member of the UN Security Council?
- (a) France (b) China
(c) Japan (d) United Kingdom
79. Consider the following statements about some planets in the solar system:
- Mercury has no atmosphere.
 - Venus has two moons.
 - There is no land on Jupiter.
 - Rings of Saturn are composed of lumps of ice and dust.
- Which of the statements given above are correct?
- (a) 1 and 2 only (b) 3 and 4 only
(c) 1, 2 and 3 (d) 1, 3 and 4
80. Which one of the following passes is **not** located in Indian Himalayan region?
- (a) Zojila (b) Bolan
(c) Shipkila (d) Lipulekh
81. Which one of the following set of trees does **not** belong to Temperate Floral Zone of Himalaya?
- (a) Cashewnut and Magnolia
(b) Oak and Maple
(c) Rhododendrons
(d) Birch and Laurels
82. Which one of the following statements about plantation agriculture is **not** correct?
- (a) Plantation farm estates are scientifically managed.
(b) Plantation farming requires heavy capital outlay.
(c) Plantation farm lands have mainly foreign ownership and local labour.
(d) Plantation farmers rear the animals for sale.
83. Match List I with List II and select the correct answer using the code given below the Lists :
- | List I
(Name of Shifting
Cultivation) | List II
(Country) |
|---|----------------------|
| A. Roca | 1. Sri Lanka |
| B. Chena | 2. Thailand |
| C. Masole | 3. Brazil |
| D. Tamarai | 4. Zaire |
- Code:**
- | | A | B | C | D |
|-----|---|---|---|---|
| (a) | 2 | 4 | 1 | 3 |
| (b) | 2 | 1 | 4 | 3 |
| (c) | 3 | 4 | 1 | 2 |
| (d) | 3 | 1 | 4 | 2 |
84. Consider the following statements with reference to Paleolithic tools:
- Isampur was a well-known center of stone tool manufacture, located In Gulbarga district of Karnataka and was situated along a small seasonal stream known as Kamta Halla.

2. A Paleolithic blade is a flake tool, the length of which is more than twice its width.
Which of the statements given above is/are correct?
(a) 1 only (b) 2 only
(c) Both 1 and 2 (d) Neither 1 nor 2
85. Consider the following statements about science in medieval South India :
1. The Katapayadi system of numerals, which was invented by Vararuchi of Kerala, the author of Chandra Vakyas, was used for calculating the position of Moon on any day of the year.
 2. Achyuta Pisharati (1550–1621) wrote Uparagakriyakrama, a text on eclipses.
 3. Ravi Varma of Mahodayapuram set up an observatory and is also said to have inaugurated the Kollam era.
- Which of the statements given above is/are correct?
(a) 1 and 3 only (b) 3 only
(c) 1 and 2 only (d) 1, 2 and 3
86. Which of the following dynasties of South India issued their documents first in Prakrit and later in Sanskrit?
(a) The Cholas of Tamil Nadu
(b) The Pandyas of the post-Sangam Age
(c) The Pallavas of Tondaimandalam
(d) The Gangas of Kalinganagara
87. Who was the author of the Gwalior -Prashasti of Mihira Bhoja?
(a) Nagabhata (b) Vatsaraja
(c) Baladitya (d) Kakkuka
88. The Sahajiya Cult, which can be traced back to 10th and 11th centuries, is usually associated with:
(a) early Bhakti traditions
(b) a kind of early Sufism
(c) early Upanishadic philosophy
(d) Buddhism
89. The landmark Supreme Court judgment in the case *Subhash Sharma v. Union of India* (1991) refers to which one of the following basic features of the Constitution of India?
(a) Judicial Review
(b) Rule of Law
(c) Free and fair elections
(d) Fundamental Rights
90. Which of the following statements about the Panchayats in India, as per the Constitution of India is/are correct?
1. There is a provision for reservation of seats for the Scheduled Castes and Scheduled Tribes.
2. Panchayats are not authorised to collect taxes.
Select the correct answer using the code given below:
(a) 1 only (b) 2 only
(c) Both 1 and 2 (d) Neither 1 nor 2
91. Which one of the following statements about Mission Indradhanush, launched by the Government of India in 2014, is correct?
(a) It relates to provisions for Child Health Screening and Early Intervention Services.
(b) It meets the diverse health needs of adolescents.
(c) It aims to increase the full immunisation coverage for children.
(d) Its objective is to achieve universal access to equitable, affordable, and quality healthcare services.
92. Which one of the following amendments to the Constitution of India has introduced reservations in education and in public employment for people from the Economically Weaker Sections (EWS) of society?
(a) The Constitution (101st Amendment) Act
(b) The Constitution (102nd Amendment) Act
(c) The Constitution (122nd Amendment) Act
(d) The Constitution (103rd Amendment) Act
93. Which among the following Fundamental Rights is **not** suspended when an Emergency is declared?
(a) Protection in respect of conviction for offences
(b) Right to constitutional remedies
(c) Right to move freely throughout the territory of India
(d) Equality before law
94. Any question pertaining to the disqualification of a member of the Lok Sabha on the ground of defection is decided by:
(a) The President of India
(b) The Speaker of the Lok Sabha
(c) The Supreme Court of India
(d) The concerned Political Party
95. Which one of the following statements about Indian Maritime University (IMU) is **not** correct?
(a) It was established through an Act of Parliament as a Central University.
(b) It was established primarily to support the Indian Navy.
(c) It is located in Chennai.
(d) It was established to extend the benefits of knowledge and skill for development of individuals and society by associating closely with local, regional and national issues of development.
96. Which of the following pairs is/are correctly matched?
- | Plateau | Continent |
|---------------|-----------------|
| 1. Abyssinian | : Africa |
| 2. Patagonian | : Australia |
| 3. Anatolian | : Asia |
| 4. Iberian | : North America |
- Select the correct answer using the code given below :
(a) 1 only (b) 1 and 3 only
(c) 2, 3 and 4 only (d) 1, 2, 3 and 4
97. Which of the following pairs of Isolines and its properties are correctly matched?
1. Isonif : Snowfall

2. Isohel : Sunshine
 3. Isohaline : Salinity
 4. Isohypse : Cloudiness

Select the correct answer using the code given below:

- (a) 1, 2 and 3 (b) 2, 3 and 4
 (c) 1 and 3 only (d) 1, 2 and 4

98. Which of the following is the correct order of clouds in ascending order (lowest to highest) of height from surface?

1. Cirrocumulus
 2. Nimbostratus
 3. Cirrus
 4. Altostratus

Select the correct answer using the code given below:

- (a) 1, 2, 4, 3 (b) 2, 4, 3, 1
 (c) 3, 2, 1, 4 (d) 2, 4, 1, 3

99. Which of the following pairs of revolution in agriculture sector and its production are correctly matched?

1. Pink revolution : Shrimp production
 2. Yellow revolution : Oilseeds production
 3. Black revolution : Biodiesel production
 4. Golden revolution : Egg production

Select the correct answer using the code given below:

- (a) 1, 2 and 3 (b) 2 and 3 only
 (c) 1 and 3 only (d) 2 and 4 only

100. Which one among the following statements about National Highways Authority of India (NHAI) is **not** correct?

- (a) NHAI collects fees on the National Highway.
 (b) NHAI conducts training of Highway Engineers at entry level and in-service.
 (c) NHAI provides consultancy and construction services in India and abroad.
 (d) NHAI regulates and controls the plying of vehicles for its proper management.

101. Which of the following statements about the National Centre for Good Governance (NCGG) are correct?

1. NCGG was set up by the Sardar Vallabhbhai Patel National Police Academy.
 2. The National Institute of Administrative Research (NIAR) has been rechristened and subsumed into NCGG.
 3. NCGG is an apex-level autonomous body under the Ministry of Home Affairs.
 4. The Chairperson of the Governing Body of the NCGG is the Cabinet Secretary to the Government of India.

Select the correct answer using the code given below:

- (a) 1, 2 and 4 (b) 2 and 4 only
 (c) 1 and 3 only (d) 3 and 4 only

102. Match List I with List II and select the correct answer using the code given below the Lists :

List I (International Yoga Day)	List II (Theme)
A. 6 th Edition	1. Yoga for well-being
B. 7 th Edition	2. Yoga for health – Yoga at home
C. 8 th Edition	3. Yoga for Vasudhaiva Kutumbakam
D. 9 th Edition	4. Yoga for Humanity

Code:

A	B	C	D
(a) 2	4	1	3
(b) 2	1	4	3
(c) 3	1	4	2
(d) 3	4	1	2

103. The joint multinational maritime exercise named IBSAMAR is conducted by the Navies of which of the following countries?

- (a) India, Bangladesh, Sri Lanka and Maldives
 (b) India, Bangladesh and South Africa
 (c) India, Bangladesh, Sri Lanka and Mauritius
 (d) India, Brazil and South Africa

104. In which one of the following cities is the Heliopolis Commonwealth War Grave Cemetery located?

- (a) Marseille (b) Washington D.C.
 (c) Cairo (d) Athens

105. Under which one of the following rivers has India's first underwater metro rail tunnel been constructed?

- (a) Yamuna (b) Ganga
 (c) Hooghly (d) Gomti

106. Which among the following set of national teams participated in the South Asian Football Federation Championship – 2023?

- (a) Sri Lanka, India, Bangladesh
 (b) Lebanon, Kuwait, Pakistan
 (c) India, Pakistan, Myanmar
 (d) Nepal, Sri Lanka, Bhutan

107. Which butterfly species was recently named the official butterfly of Jammu and Kashmir?

- (a) Noble's Helen (b) Kaiser-i-Hind
 (c) Blue Duke (d) Blue Pansy

108. Which company operated the ill-fated Titan submersible which recently imploded killing all five passengers while on a dive to visit the Titanic shipwreck under the waters of the North Atlantic?

- (a) Odyssey Marine Exploration
 (b) M.A.R.E. (Marine Adventure for Research and Education)

- (c) Ocean Gate Expeditions
(d) Seafarer Exploration Corporation
109. Which among the following is India's longest road tunnel?
(a) Atal Tunnel
(b) Kuthiran Tunnel
(c) Dr. Syama Prasad Mookerjee Tunnel
(d) Banihal Qazigund Road Tunnel
110. Match List I with List II and select the correct answer using the code given below the Lists:

List I

(Padma Vibhushan/
Padma Bhushan
Awardee, 2023)

Yoga Day)

- | | |
|-----------------------------------|---------------------------|
| A. Dilip Mahalanabis (posthumous) | 1. Literature & Education |
| B. Sudha Murthy | 2. Public Affairs |
| C. S.M. Krishna | 3. Social Work |
| D. S.L. Bhyrappa | 4. Medicine |

Code:

- | | A | B | C | D |
|-----|----------|----------|----------|----------|
| (a) | 4 | 3 | 2 | 1 |
| (b) | 4 | 2 | 3 | 1 |
| (c) | 1 | 2 | 3 | 4 |
| (d) | 1 | 3 | 2 | 4 |

111. Match List I with List II and select the correct answer using the code given below the Lists:

List I

(Festivals of North
East India)

List II

(State)

- | | |
|----------------------------|--------------|
| A. Hornbill Festival | 1. Meghalaya |
| B. Chapchar Kut | 2. Sikkim |
| C. Nongkrem Dance Festival | 3. Nagaland |
| D. Saga Dawa | 4. Mizoram |

Code:

- | | A | B | C | D |
|-----|----------|----------|----------|----------|
| (a) | 2 | 4 | 1 | 3 |
| (b) | 3 | 1 | 4 | 2 |
| (c) | 3 | 4 | 1 | 2 |
| (d) | 2 | 1 | 4 | 3 |

112. From which one of the following countries has India procured the S-400 Triumf air defence missile system?
(a) United Kingdom (b) U.S.A.
(c) France (d) Russia

113. Abhinav Bindra is the winner of the first ever individual Olympic gold medal for India. He won gold in which shooting event and in which Olympic Games?

- (a) 10 meter air pistol, London
(b) 10 meter air rifle, London
(c) 10 meter air rifle, Beijing
(d) 10 meter air pistol, Beijing

114. Cheetahs were recently re-introduced to India from Africa. From which language is the name 'Cheetah' derived?

- (a) Swahili (b) Afrikaans
(c) Somali (d) Sanskrit

115. A new species of pit-viper was discovered in 2019 and named after the State in which it was found. Identify the State from among the following:

- (a) Kerala
(b) Arunachal Pradesh
(c) Andaman and Nicobar Islands
(d) Assam

116. Who among the following set of players from India have either won or secured the runner-up position in the : All England Badminton Tournament?

- (a) Prakash Padukone, P.V. Sindhu, Parupalli Kashyap
(b) Pullela Gopichand, Saina Nehwal, Lakshya Sen
(c) Prakash Padukone, Pullela Gopichand, Srikanth Kidambi
(d) Lakshya Sen, Saina Nehwal, P.V. Sindhu

117. Who among the following leaders recently won the election to the office of the President of Turkey?

- (a) Recep Tayyip Erdogan
(b) Kemal Kilicdaroglu
(c) Ahmet Necdet Sezer
(d) Abdullah Gul

118. Georgi Gospodinov Georgiev won the International Booker Prize, 2023 for the darkly comic novel by the name:

- (a) The Promise (b) Shuggie Rain
(c) Time Shelter (d) Girl, Woman, Other

119. The Grand Order of the Chain of the Yellow Star is the highest civilian honour of which among the following countries?

- (a) Fiji (b) Papua New Guinea
(c) Egypt (d) Suriname

120. Which one among the following correctly represents the theme on which the interiors of the new Parliament Building is based?

- | | |
|-------------|-------------|
| Lok Sabha | Rajya Sabha |
| (a) Lotus | Banyan |
| (b) Peacock | Lotus |
| (c) Peacock | Banyan |
| (d) Lotus | Peacock |

Answers			
Q No	Answer Key	Topic Name	Chapter Name
1	(c)	Defect in Vision	Ray Optics
2	(b)	Distance Time Graph	Kinematics
3	(a)	Concave Mirror	Ray Optics
4	(d)	Law of Gravitation	Gravitation
5	(a)	Sonic Boom	Sound Wave
6	(c)	Symbol of Element	Atomic Structure
7	(d)	Composition of Atmosphere	Environment
8	(a)	Clarification of Compound	Matter in Surroundings Our
9	(d)	Chemical Reaction	Chemical Bonding
10	(c)	Balancing of Chemical Reaction	Chemical Reaction and Equation
11	(a)	Leaves	Morphology of Plants
12	(c)	Chromosomes	Cell and its Organelles
13	(d)	Cell and its Organelles	Cell and its Organelles
14	(c)	Plant Cell	Cell and its Organelles
15	(d)	Vijaynagar Empire	An Imperial Capital: Vijayanagara
16	(b)	Ancient India	Jainism and Their Rules
17	(a)	Indian Art and Culture	Caves Related Arts
18	(b)	Stone Age	Making Tools in Stoneage Era
19	(c)	Ancient India	List of Books Related to Ancient India With Their Writers
20	(b)	Modern India	1947 Freedom of India- Act of 1947
21	(b)	Niti Aayog	Planing in India
22	(b)	Polity	Financial Year of The Government of India.
23	(b)	International Organisations	United Nation and its Resolutions
24	(d)	Geography	Formation of Fog
25	(c)	Geography	Formations of Lands By Wind Erosion
26	(c)	Agriculture	Some Major Crops of India
27	(c)	Geography	Settlement Patterns of Lake in India
28	(a)	Biotic and Abiotic	Ecology
29	(b)	Geography	Important Rocks and Mountains of The World
30	(c)	Money Supply	Money and Banking
31	(c)	Money Supply	Money and Banking
32	(c)	Foreign Exchange	Foreign Exchange Rate
33	(d)	Taxation	Gst- Related Points
34	(c)	Potential Energy	Work Energy and Power
35	(b)	Speed of Sound	Sound Wave
36	(c)	Force On Moving Charge in Magnetic Field	Magnetism

37.	(d)	Relation B/W Degree Celsius and Fahrenheit	Matter in Our Surrounding
38	(a)	Refraction	Ray Optics
39.	(b)	Physical Change and Chemical Change	Matter in Our Surrounding
40.	(b)	Properties of Diamond and Graphite	Carbon and its Compound
41.	(a)	Compound	Is Matter Around Us Pure
42.	(b)	Elements in Periodic Table	Structure of Atoms
43.	(c)	Acid Present in Naturally Occurring Substance	Acid and Bases
44	(a)	Cell and its Organelles	Cell and its Organelles
45	(d)	Cell and its Organelles	Cell and its Organelles
46	(b)	Water Flow in Plants	Plant Nutrition
47	(b)	Energy Flow	Ecosystem
48	(b)	Mode of Nutrition	Plant Kingdom
49	(a)	Female Reproductive Cell	Reproduction in Plants
50	(a)	Medieval India	Time Period of Shivaji or Maratha Empire
51	(b)	Modern Indian Authors	List of Books Related to Time of India Freedom Struggle
52	(c)	Ancient India	Religion and Culture Aspects Women Monks.
53	(b)	Indian History South India	Some Important Key Words For Administration.
54	(a)	Ancient India	Gupta Period- Temples
55	(d)	South India	Chola Empire Sculptures
56	(b)	International Organisations	Asean
57	(b)	Food Security in India	PDS System in India
58	(d)	Economy	Human Development Goals
59	(c)	Science and Technology	Launching Important Satellite, Internet, Communication News
60	(d)	Classification of Soil	Soil Chemistry
61	(c)	India-Maps	Locations of Some Important Cities in India.
62	(b)	Environment	GNH List
63	(b)	Geography	Formation of Cloud
64	(c)	Government Budget	Fiscal Deficit and Primary Deficit
65	(b)	Balance of Trade	Inflation in Covid Time
66	(b)	Money and Banking	Commercial Bank
67	(b)	UN-SDG Goals	India -17 Goals of SDG
68	(a)	Producer's Behaviour	Supply Function
69	(c)	Poverty in India	Measures of Poverty
70	(d)	Medieval India	Maratha Empire
71	(d)	Ancient India	Hathigumpha Inscription
72	(c)	Early Medieval India	Religion and Culture
73	(a)	Medieval India	Foreign Travellers and Ambassadors Came to India

74	(c)	Current Affairs	Climate Change
75	(a)	Climate Change Environment Issues	Global Level Environment Related Current Affairs
76	(c)	Economy	Sustainable Growth
77	(a)	Current Affairs	Operations By Indian Army
78	(c)	Polity	International Organizations
79	(d)	Geography	Solar System
80	(b)	Geography of Himalayan Region	Passes in Himalayan Region
81	(a)	Geography of Himalayan Region	Temperate Zone of Himalayan Region
82	(d)	Agriculture	Plantation in Farming
83	(d)	Geography	Agriculture- Shifting Cultivation
84	(d)	Stone Age Era	Paleolithic Era Tools.
85	(d)	Medieval History of India	South India
86	(c)	Medieval History of India	South India- Documents
87	(c)	Medieval History of India	Middle India History
88	(a)	Early Medieval History of India	Bhakti Tradition
89	(a)	Polity	Judicial Review
90	(a)	Polity	Panchayati Raj
91	(c)	Government Schemes	Mission Indradhanush
92	(d)	Constitution of India	Important Amendment Act.
93	(a)	India of Constitution	Fundamental Rights
94	(b)	Indian Constitution	Parliament- Lok Sabha
95	(b)	Current Affairs	Some Important Universities of India
96	(b)	Geography	Continent - Plateaus
97	(a)	Geography	Isolines
98	(d)	Geography	Formation of Clouds
99	(b)	Agriculture	Some Important Revolutions Related to Production in India
100	(d)	Transport System	National Highways
101	(b)	Polity	Good Governance
102	(b)	Current Affairs	Yoga Days Themes
103	(d)	Current Affairs	Ibansar Naval Exercise
104	(c)	War Related Cities	Commonwealth War Grave Cemetery
105	(c)	Transport System	Metroline
106	(b)	Sports	Football Championship-2023
107	(d)	Science - Kinds of Species	Kinds of Species
108	(c)	Geography	Titan Submersible
109	(c)	Geography- Roads and Tunnels	Longest Tunnels of India
110	(a)	National Awards	Padma Vibhushan, Padma Shri
111	(c)	Art and Culture	Northern States - Festivals
112	(d)	Current Affairs	Defence Missile System Agreements

113	(c)	Sports Awards	Olympic Games
114	(d)	Current Affairs	Animal Kingdom
115	(b)	Science, Inventions & Discoveries	Current Affairs
116	(b)	Sports Awards	Badminton Championship
117	(a)	International Politics	World Leaders
118	(c)	Interational Books	International Bookers Prizes
119	(d)	Countries Awards	Civilian Awards
120	(b)	National Symbols	New Parliament of India

Answers with Explanation

1. Option (c) is correct.

Explanation:

The person can see near objects clearly but can not see distant object. This condition is called myopia. This is because f_{\max} is smaller than the distance from retina to lens. This is due to the lens becomes too thick or the size of eyeball increases.

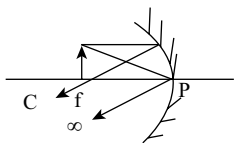
2. Option (b) is correct.

Explanation:

The slope of distance-time graph represents speed. Here the slope of b is maximum and of c is minimum.

3. Option (a) is correct.

Explanation:



$$R = -50 \text{ cm}$$

$$f = \frac{R}{2} = -25 \text{ cm}$$

$$u = -25 \text{ cm}$$

Mirror formula

$$\frac{1}{f} = \frac{1}{v} + \frac{1}{u}$$

$$\frac{1}{-25} = \frac{1}{v} + \frac{1}{-25}$$

$$\frac{1}{-25} - \frac{1}{25} = \frac{1}{v}$$

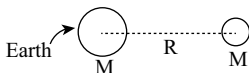
$$\frac{1-1}{25} = \frac{1}{v}$$

$$\frac{0}{25} = \frac{1}{v} \Rightarrow v = \frac{25}{0} = \infty$$

Alternative: When an object is at focus point, its image will always form at infinity.

4. Option (d) is correct.

Explanation:



The force of gravity between the moon and earth is

$$F = G \frac{Mm}{R^2}$$

Now the new force between the earth and moon will be

$$F' = GMm \frac{1}{(R/2)^2}$$

$$F' = 4G \frac{Mm}{R^2} = 4F$$

$$F' = 4F$$

5. Option (a) is correct.

Explanation:

Sonic boom is impulsive sound produced when an object moves faster than the speed of sound.

6. Option (c) is correct.

Explanation:

Symbol for element gold, Tin and Lead are respectively.

Gold – Au

Tin – Sn

Lead – Pb

7. Option (d) is correct.

Explanation:

Mars atmosphere contain 95% CO_2 and Venus consist 97% CO_2 in atmosphere.

Venues = 96.5%

Mars = 95%

8. Option (a) is correct.

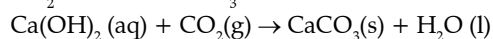
Explanation:

Compound can be break down into its constituent element by chemical method like electrochemical methods.

9. Option (d) is correct.

Explanation:

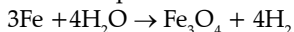
Slaked lime when dissolved in water it leads to the formation of limewater. This lime water reacts with CO_2 and form CaCO_3



10. Option (c) is correct.

Explanation:

For a balanced reaction number of atoms on LHS must be equal to number of atoms on RHS



	No of atom LHS	No. of atom RHS
Fe	3	3
H	8	8
O	4	4

11. Option (a) is the correct

Explanation:

Phyllotaxy refers to the arrangement of leaves around the stem. Proper leaf arrangement is essential for optimal sunlight exposure and photosynthesis.

12. Option (c) is correct.

Explanation:

Chromosomes consist of histone proteins and DNA. Cells have pairs of chromosomes known as homologous chromosomes. Chromosomes are made up of chromatin, which contains a single DNA molecule and associated proteins.

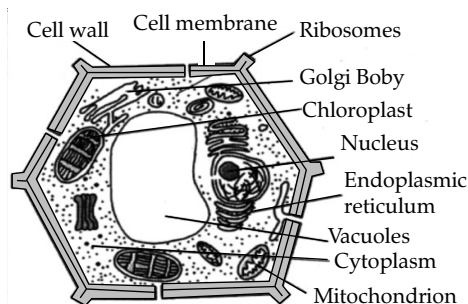
13. Option (d) is correct.

Explanation:

In certain organisms like bacteria, the nuclear region may lack clear definition due to the absence of a nuclear membrane. This undefined nuclear region containing only nucleic acids is referred to as a nucleoid. Organisms with cells lacking a nuclear membrane are called prokaryotes.

14. Option (c) is correct.

Explanation:



15. Option (d) is correct.

Explanation:

The Vijayanagar Empire great ruler Krishnadevaraya composed Amuktamalyada in Telugu language. It is an epic poem of the 16th century.

16. Option (b) is correct.

Explanation:

In the period of Mauryan empire (Chandragupta Maurya) Digambara Jain monks' migration toward the southward from Ganges River to Karnataka region in 4th century BCE.

17. Option (a) is correct.

Explanation:

Vikramkhola cave is in Odisha (Jharsuguda place). There is some ancient script engraved on the wall of Bikramkhola and paintings of animals.

18. Option (b) is correct.

Explanation:

Levallois technique was used in India in the Middle Stone age to make small tools they are sharp on the edge.

19. Option (c) is correct.

Explanation:

1. Bakshali manuscript is a mathematical script. It was written in Gatha language.

2. Aryabhata was the great mathematician and astronomer in ancient India. He discovered the value of pi.

3. Sharagandhara Samhita was a book about Ayurvedic medicine, which was written by Acharya Sharagandhara.

20. Option (b) is correct.

Explanation:

Act of 1947 is related to the two new free nations India and Pakistan become independent dominion states. That Act was passed by British Parliament on 18th July 1947.

21. Option (b) is correct.

Explanation:

NITI Aayog is a non-constitutional body. The prime minister of India is chairperson of the NITI Aayog. This organization is established on 1st January 2015.

22. Option (b) is correct.

Explanation:

Vote on Account is the process withdrawal the money from the funds to the meet regular government expenses and salaries.

23. Option (b) is correct.

Explanation:

United Nation adopted 17 sustainable development goals like- quality in education, gender quality, good health, clean water and sanitation, decent work and economic growth, zero hunger etc.

24. Option (d) is correct.

Explanation:

Fog is formed by the condensation of water vapour. When water condenses in the form of gaseous state is called fog. Many types of fog – Advection fog, Radiation fog (valley area fog we can see), Ice fog, steam fog.

25. Option (c) is correct.

Explanation:

Zeugen is a type of landform by which is formed by wind erosion.

26. Option (c) is correct.

Explanation:

In India, bajra and jawar crops almost mostly dry farming crops. But sugarcane is a water intensive related crop.

27. Option (c) is correct.

Explanation:

In India, circular pattern used for lakes ponds, taken in planned villages for development.

28. Option (a) is correct.

Explanation:

Resources can be classified based on their origin into biotic and abiotic resources. Abiotic resources include non-living elements like land, water, air, and minerals such as gold, iron, silver, and copper.

29. Option (b) is correct.

Explanation:

Mount Kilimanjaro is the highest mountain of the African continent. The height of the mountain is 5895. This mountain located in Tanzania country.

30. Option (c) is correct.

Explanation:

To control the supply of money in an economy govt. increases the taxes, reducing the government spending on subsidies, welfare programs. Govt. also sells its bonds in the market to control the supply or flow of money.

31. Option(c) is correct.

Explanation:

Money supply refers to the estimation of the quantity of money at a point of time in an economy. Narrows money is a measure of money supply which includes currency held with people, demand deposit and other deposits with Reserve Bank of India.

32. Option (c) is correct.

Explanation:

The devaluation and depreciation effects are very bad for the domestic currency because currency loses its value, purchasing power declines so that import increases and exports decreases. This situation is called inflation.

33. Option (d) is correct.

Explanation:

GST (Good and services taxes) is an indirect tax applied on supply on goods and services. But on petroleum and some other things GST is not applied to it.

34. Option (c) is correct.

Potential energy = mgh

Potential energy depends upon height from ground. Therefore at maximum amplitude the PE is maximum and at mean position the PE is minimum.

35. Option (b) is correct.

Explanation:

Speed of sound in a medium depends upon material, temperature, density and elasticity stainless steel is more elastic than other given material. So the speed of sound is maximum in stainless steel

36. Option (c) is correct.

Explanation:

$$\vec{F} = q\vec{v} \times \vec{B}$$

$$\text{Or } F = qvB \sin \theta$$

F is maximum, when $\sin \theta = \text{maximum}$

$$\sin \theta = 1 \text{ (maximum)}$$

When $\theta = 90^\circ$

37. Option (d) is correct.

Explanation:

The correct relationship is

$$T_F = \frac{9}{5} \times T_C + 32$$

T_F = temperature in Fahrenheit

T_C = Temperature in degree Celsius

38. Option (a) is correct.

Explanation:

When light travels from rare medium to denser medium it bends towards normal.

Speed of light depends upon refractive index.

$$\mu = \frac{c}{v} \Rightarrow v = \frac{c}{\mu}$$

$$v \propto \frac{1}{\mu}$$

Therefore the speed of light decreases if refractive index increases.

39. Option (b) is correct.

Explanation:

During physical change no new chemical substance is formed During chemical change new substance is formed. Melting of candle involve physical change During burning CO_2 gas informed so chemical change take place.

40. Option (b) is correct.

Explanation:

Diamond and graphite have different physical and chemical properties Diamond is hard but graphite is soft. Diamond is non-conductor but graphite is a conductor. Diamond and graphite both have different structure.

41. Option (a) is correct.

Explanation:

Compound consist two or more atom in a fixed ratio.

Sugar – $\text{C}_{12}\text{H}_{22}\text{O}_{11}$

Air – Mixture

Milk – Mixture

Tea - Mixture

42. Option (b) is correct.

Explanation:

Total naturally occurring elements are 94 only

43. Option (c) is correct.

Explanation:

Oxalic acid found in tomatoes while tartoric acid is found in tamarind paste.

44. Option (a) is correct.

Explanation:

Mitochondria are the primary site for cellular respiration and energy storage in the form of ATP molecules. Chloroplasts are involved in photosynthesis. Ribosomes play a role in protein

- synthesis. The rough endoplasmic reticulum, which contains ribosomes, is responsible for producing proteins.
45. Option (d) is correct.
Explanation:
Cell walls are found in various organisms such as bacteria, archaea, fungi, plants, and algae. Animals and some protists lack cell walls and have cell membranes instead. Tapeworms belong to the animal kingdom and do not possess cell walls.
46. Option (b) is correct.
Explanation:
The Cohesion and Transpiration Pull Theory, proposed by Dixon and Joly in 1894, is based on factors like cohesion (attraction between water molecules), adhesion (water's affinity for vessel walls), and tension created by transpiration pull. This theory explains how water is pulled upward through the xylem in plants.
47. Option (b) is correct.
Explanation:
Energy flow in an ecosystem is unidirectional because most of the energy is released as heat during metabolic activities. Only about 10% of energy is transferred from one trophic level to another, leading to a one-way flow of energy. In contrast, nutrient flow in an ecosystem is cyclic, as nutrients move between trophic levels in a continuous cycle.
48. Option (b) is correct.
Explanation:
Rhizopus is a common genus of fungi that includes species known for being saprophytic, meaning they feed on decaying organic matter. A saprophyte is an organism that obtains its nutrients from decaying organic matter.
49. Option (a) is correct.
Explanation:
An unfertilized embryo sac in angiosperms consists of seven cells and eight nuclei. Among the eight nuclei, six are enclosed by cell walls and form cells. These cells include three antipodal cells, two synergids, and one egg cell. Additionally, there is a large central cell with two polar nuclei. The ploidy level of the plant is diploid (2n), so the nucellus is also diploid (2n).
50. Option (a) is correct.
Explanation:
1. Capture of Torna – 1646 A.D
 2. Annexation of Javli – 1656 A.D
 3. Attack on Afzal Khan- 1674 A.D
 4. Attack on Shaista Khan – 1663 A.D by Shivaji
51. Option (b) is correct.
Explanation:
Subhas Chandra Bose wrote the book "The Indian Struggle 1920-1942".
52. Option (c) is correct.
Explanation:
Mostly for important Nayanar woman saints- Appars, Sambandar, Manikkavaasagar, Sundarar, Isaiganiyar.
53. Option (b) is correct.
Explanation:
Nattar was who charge all the matters of the village area in the times of chola period.
Option a, c, d are correct explanations.
54. Option (a) is correct.
Explanation:
Gupta period Deogarh Temple situated in Jhansi, Uttar Pradesh. This temple's main lord is lord Vishnu.
55. Option (d) is correct.
Explanation:
All the given statements are correct. Nataraja Bronze sculpture was made in 12th century C.E Chola dynasty.
56. Option (b) is correct.
Explanation: Option 1 and 3 are correct.
ASEAN – Association of Southeast Asian Nation, it was established on 8 August 1967, declaration was signed in Bangkok. Headquarter- Jakarta, capital of Indonesia. On 8 August 1967, five pioneers - the Unfamiliar Priests of Indonesia, Malaysia, the Philippines, Singapore, and Thailand - plunked down together in the fundamental lobby of the Branch of International concerns working in Bangkok, Thailand and marked a report. By uprightness of that report, the Relationship of Southeast Asian Countries (ASEAN) was conceived. The five Unfamiliar Priests who marked it - Adam Malik of Indonesia, Narciso R. Ramos of the Philippines, Tun Abdul Razak of Malaysia, S. Rajaratnam of Singapore, and Thanat Khoman of Thailand - would in this manner be hailed as the principal architects of likely the best between administrative associations in the creating scene today. Also, the report that they marked would be known as the ASEAN Announcement.
57. Option (b) is correct.
Explanation:
Point 1, 2, 4 are correct. PDS system is operated by both central and states governments. This system is controlled by the Ministry of Consumer Affairs. Public Distribution System work to distribute food and non- food items to poor section of society.
58. Option (d) is correct.
Explanation:
The six pillars are described for Human Development- equity, productivity, empowerment, cooperation, sustainability, and security.
59. Option (c) is correct.
Explanation:
G-10 countries control over the SWIFT banking system. This system works on international banking and transfer of money at a secure level. SWIFT SYSTEM was introduced in 1973.
60. Option (d) is correct.
Explanation:
Saline soil contain a large portion of Na, K and Mg. They are infertile and found in Gujrat and Sunderban area of west Bengal.

61. Option (c) is correct.

Explanation:

Panaji is 1,070.64 mi (1,723.03 km) north of the equator, so it is situated in the northern half of the globe.

62. Option (b) is correct.

Explanation:

Gross National Happiness (GNH) development indicator is Bhutan 2008.

63. Option (b) is correct.

Explanation:

High types of clouds are three- cirrus, cirrostratus, and cirrocumulus. Points 1, 2, 4 are the right explanation of clouds.

64. Option (c) is correct.

Explanation:

Definition: Gross Essential Deficiency is Gross Monetary Shortfall less interest installments. The interest payment will be the payment that a government makes on borrowings to the creditors. Primary deficit = Fiscal deficit – Interest payment.

65. Option (b) is correct.

Explanation:

The impacts of the spread of Coronavirus on retail and discount costs of metropolitan business sectors in India, as well as cost twisting among business sectors and the increase among retail and discount costs. Utilizing fixed-impacts board relapse models, we find that with the spread of Coronavirus, costs expanded for products with longer timeframe of realistic usability like heartbeats and handled things, while costs of vegetables, for example, onions and tomatoes declined significantly at the beginning of the pandemic. Further, market mutilations expanded altogether for most products. Beats experienced enormous cost bends between business sectors as well as imprint ups among retail and discount costs. We, nonetheless, see no significant cost bends on the lookout for rice and wheat, which are constrained by Government's base help costs.

66. Option (b) is correct.

Explanation:

The money multiplier and saving having close relationship. The size of the multiplier depends upon household's marginal decisions to spend or save. If people start hold more currency in hand and less saving, it raises the withdrawal of money in circulation which leads decrease in multiplier.

67. Option (b) is correct.

Explanation:

INDIA has 17 SDG goals for development.

1. No Poverty
2. Zero Hunger
3. Good Health and Well-being
4. Quality Education
5. Gender Equality
6. Clean Water and Sanitation

7. Affordable and Clean Energy
8. Decent Jobs and Economic Growth
9. Industry, Innovation, and Infrastructure
10. Reduced Inequalities
11. Sustainable Cities and Communities
12. Responsible Consumption and Production
13. Climate Action
14. Life Below Water
15. Life on Land
16. Peace and Justice - Strong Institutions
17. Partnerships for the Goals

68. Option(a) is correct.

Explanation:

According to law of supply, other things remaining constant, the market supply for a good increases if own price of the commodity increases. If the cost of production is lower, the profits available at a given price will increase, and producers will supply more and more product in the market. But decrease in the price of substitute goods decreases the quantity supply of commodity.

69. Option (c) is correct.

Explanation:

There are two approach for estimating poverty in India

- (a) **Social-Economic approach** - Through a minimum cost of living for food requirement, clothing, footwear, fuel and light, educational and medical requirement etc. are determined for subsistence.
- (b) **Scientific Approach** - Through minimum calories requirement (2400 calories per person per day in rural areas and 2100 calories per person per day in urban areas.)

70. Option (d) is correct.

Explanation:

Maratha empire began in 1674 with the coronation of Chhatrapati Shivaji Maharaj. He was won many battles against British East India company and Mughal empire in Southwest India.

71. Option (d) is correct.

Explanation:

The Hathigumpha Etching is a seventeen-line Prakrit etching kept in Brahmi script in a sinkhole called Hathigumpha near Bhubaneswar, Odisha. It was engraved by the Jain ruler Kharavela of the Kalinga domain during the second and initial many years BCE. The Hathigumpha Etching contains a consistent with biography of a ruler from old India's eastern district, notwithstanding different things. It moreover contains severe principles, public structure projects, military endeavors, and their objectives, as well as socio-social data. Paleographically, the etching dates from the focal point of the key century BCE to the beginning of the essential century CE.

72. Option (c) is correct.

Explanation:

15th century, Sankaradeva emerged as a leading proponent of Vaishnavism in Assam. His teachings

were known as the Bhagavati dharma because they were based on the Bhagavad Gita and the Bhagavata Purana. It focused on absolute surrender to the supreme deity, in this case, Lord Vishnu.

73. Option (a) is correct.

Explanation:

Abdur Razzaq was a Persian traveler, and diplomat. He was the famous foreign travelers to visit India. If you're looking for fascinating biographies of famous 15th-century travelers, this will be a perfect start. He witnessed political and military events in Samarqand (in present-day Uzbekistan) and Herat (in present-day Afghanistan). He was writing a 45-page travelogue about his experiences, the first-hand accounts of the lives of common people in Calicut and the events that took place in the Ancient City of Vijayanagar at Hampi. He provided one of the most significant descriptions of the Vijayanagar Empire in the 15th century. Chinese travelers, Portuguese travelers & renowned explorers like Marco Polo, we come to know about ancient India in a much better way. We shall talk more about Abdur Razzaq in this section since it will help us comprehend how foreigners in ancient times saw India.

74. Option (c) is correct.

Explanation:

It is global campaign in these rally non – state actors, companies, cities and healthcare institutions want to take immediate actions on global emission 2030. It was launched by UNFCCC. The UNFCCC secretariat (UN Environmental Change) is the Assembled Countries substance entrusted with supporting the worldwide reaction to the danger of environmental change. UNFCCC represents Joined Countries System Show on Environmental Change. The Show is close to all-inclusive participation (198 Gatherings) and is the parent deal of the 2015 Paris Understanding. The principal point of the Paris Understanding is to keep the worldwide typical temperature increase hundred years as close as conceivable to 1.5 degrees Celsius above pre-modern levels. The UNFCCC is additionally the parent deal of the 1997 Kyoto Convention. A definitive goal of every one of the three arrangements under the UNFCCC is to settle ozone harming substance fixations in the environment at a level that will forestall risky human obstruction with the environment framework, in a time span which permits biological systems to adjust normally and empowers maintainable turn of events.

75. Option (a) is correct.

Explanation:

30 June 2008 India launched NAPCC PLAN (National Action Plan on Climate Change) to mitigate and adapt to climate change. It is main aim to counter creating awareness among the

representatives of the public, different agencies of the government, scientists, industry.

76. Option (c) is correct.

Explanation:

Blue growth related to sustainable development in fishery industry and aquaculture. Indian government introduced this because to support maritime sector in India.

77. Option (a) is correct.

Explanation:

Operation Sadbhavana (goodwill) is a humanity operation started by Indian army in Ladakh region to stop terrorism, built schools, help to motivate tourism in in this region.

78. Option (c) is correct.

Explanation:

United nation was established in 1945. In its security council five permanent members are- U.S.A, U.K., FRANCE, RUSSIA, CHINA. The Security Gathering has essential obligation regarding the upkeep of worldwide harmony and security. It has 15 Individuals, and every Part has one vote. Under the Contract of the Unified Countries, all Part States are committed to follow Gathering choices. The Security Gathering starts to lead the pack in deciding the presence of a danger to the harmony or demonstration of hostility. It calls upon the gatherings to a question to settle it by quiet means and suggests strategies for change or terms of settlement. At times, the Security Chamber can depend on monumental endorsements or even approve the utilization of power to keep up with or reestablish worldwide harmony and security.

79. Option (d) is correct.

Explanation:

Venus is the second nearest planet to the sun. It is hotter than mercury planet. It is also the brightest planet after the moon in the sky at night. Venus rotates clockwise. Venus has no moon.

80. Option (b) is correct.

Explanation:

1. The Zoji La Pass--This pass, situated in Dras, associates three regions: Kashmir Valley in the west, Indus Valley in the east, and Suru Valley in the north-east. Attributable to huge snowfall, development of the Zoji La Passage started in 2020, making traffic significantly simpler.

2. Shipki La It interfaces the Kinnaur and Tibet locale. Non-inhabitants are not allowed to utilize this pass. It is principally used for brief distance business among India and Tibet.

3. Lipu Lekh It fills in as a tri-intersection between Uttarakhand, Tibet, and Nepal. As of late, there have been critical conflicts concerning the regional locale of a few segments of this Nepal-India course. It was India's most memorable line crossing that allowed exchange with China. The Manasarovar Yatra passes across this mountain pass.

4. Bolan Pass, significant normal entryway through the Focal Brahui Reach in Baluchistan area, Pakistan, associating Sibi with Quetta by street and rail route. For a long time, it has been a course for brokers, intruders, and migrant clans among India and higher Asia.

81. Option (a) is correct.

Explanation:

The Western Himalayan locale reaches out from Kashmir to Kumaon. Its calm zone is wealthy in backwoods of chir, pine, different conifers, and wide leaved mild trees. Higher up, timberlands of deodar, blue pine, tidy and silver fir happen. The elevated zone reaches out from the furthest reaches of the mild zone of around 4,750 meters or considerably higher. The trademark trees of this zone are significant level silver fir, silver birch and junipers. The eastern Himalayan district reaches out from Sikkim eastwards and embraces Darjeeling, Kurseong and the nearby lots. The mild zone has backwoods of oaks, shrubs, maples, rhododendrons and birch. Numerous conifers, junipers and bantam willows additionally happen here. The Assam district includes the Brahmaputra and the Surma valleys with evergreen woods, periodic thick bunches of bamboos and tall grasses. The Indus plain district includes the fields of Punjab, western Rajasthan, and northern Gujarat. It is dry and hot and upholds regular vegetation. The Ganga plain district covers the region which is alluvial plain and is under development for wheat, sugarcane, and rice. Just little regions support woods of broadly varying sorts. The Deccan district includes the whole tableland of the Indian Promontory and supports vegetation of different sorts from scour wildernesses to blended deciduous woods. The Malabar area covers the unreasonably sticky belt of mountain country lined up with the west shore of the Landmass. Other than being wealthy in timberland vegetation, this district produces significant business crops, for example, coconut, betel nut, pepper, espresso and tea, elastic, and cashew nut. The Andaman district has large amounts of evergreen, mangrove, ocean side and diluvial timberlands. The Himalayan district stretching out from Kashmir to Arunachal Pradesh through Sikkim, Meghalaya and Nagaland and the Deccan Landmass is wealthy in endemic verdure, with countless plants which are not found somewhere else.

82. Option (d) is correct.

Explanation:

Plantation in agriculture is the clearing of the forest or land to create an area of farming for one specific crop, which is grown on a large scale. This type of intensive, commercial farming method is typically owned by a single company or government, and this owner employs laborers to work on the plantation. The plants provide us with wood, fuel, rubber, oxygen etc.

83. Option (d) is correct.

Explanation:

Roca- Brazil

Chena – Sri Lanka

Masola – Zaire

Tamarai – Thailand

84. Option (d) is correct.

Explanation:

In Paleolithic age of tools were very simple pebble tools (rock shaped by the pounding of another stone to produce tools with a serrated crest that served as a chopping blade), hand adzes (tools shaped from a block of stone to create a rounded butt and a single-bevel straight or curved cutting edge), stone scrapers, cleavers, and points. Uses of tools-From the Upper Paleolithic on, there is ample evidence that early humans used materials other than stone - such as bone, antler, and ivory - as part of their toolkit. The long bones (limb bones) of animals could be split and shaped into tools like awls, and needles.

85. Option (d) is correct.

Explanation:

Katapyadi System-It is an old Indian mathematical encoding framework where Devanagari letters are doled out numbers. Here, the consonants k, t, p, y address number 1, and kh, th, ph, r address number 2, etc. Since many letters address a solitary number, there is adaptability in framing significant words to encode numbers, so the words fit in the picked prosody. For additional subtleties, go to Katapyadi Framework. Our application handles the deciphering and encoding of this framework. While deciphering is finished by syllable parsing and sorting out the related number, for encoding we have made a data set of north of three lakh Sanskrit words obtained from different word references. At the point when an info number is given, matching words are recovered from the data set. On the off chance that the information number doesn't have a precise match, then, at that point, it is parted differently, and matching words are then recovered from the data set for each section.

86. Option (c) is correct.

Explanation:

Pallava inscriptions were either in Sanskrit or Prakrit as these were considered the official languages of the dynasty. Some official scripts of Pallavi's were in Grantha/Kirantam. Inscriptions found in Andhra Pradesh and Karnataka state were in Sanskrit and Prakrit.

87. Option (c) is correct.

Explanation:

Gwalior inscription is an ancient Indian inscription written in Sanskrit that dates to the 9th century CE. It is an important historical document that provides information about the reign of Mihir Bhoj, who was a ruler of the Gurjara-Pratihara dynasty in northern India.

88. Option (a) is correct.

Explanation:

Sahajiya is a religious cult. It is related to and spread in area of Bengal, Odisha states.

89. Option (a) is correct.

Explanation:

In the 1991, a three judges bench decided on the case of Subhash Sharma vs Union of India in which the court believed that the correctness of the case of S P Gupta needs to be reconsidered and thereby a more purposive reading of the constitution is needed to be done by the Supreme Court.

90. Option (a) is correct.

Explanation:

Indian government is divided into two parts the local government and the central government. Panchayat is part of the local government. Panchayati Raj is the government at the village level that takes care of all the needs of the villagers. In 1959 the Panchayati Raj System introduced in India. Panchayati Raj is now a governance system in which gram panchayats are the basic units of local government.

91. Option (c) is correct.

Explanation:

Mission Indradhanush focuses on interventions to improve full immunization coverage for children in India from 65% in 2014 to at least 90% earlier than 2020, this will be done through special catch-up drives. Under Mission Indradhanush, the government has identified 216 high focus districts across the country.

92. Option (d) is correct.

Explanation:

The Supreme Court has upheld the 103rd Constitution Amendment providing for 10% quota for the economically weaker sections (EWS) from unreserved categories. A five-judge constitution bench, in a 3-2 verdict, held that the provision of the amendment is not in violation of the Constitution.

93. Option (a) is correct.

Explanation:

Emergency in India refers to a period of governance that can be proclaimed by the President of India during certain crisis situations. Under the advice of the cabinet of ministers, the President can overrule many provisions of the Constitution, which guarantees Fundamental Rights to the citizens of India. The emergency provisions are contained in Part 18 of the Constitution of India, from Article 352 to 360. These provisions enable the Central government to deal with any abnormal situation effectively. The rationality behind the incorporation is to safeguard the sovereignty, unity, integrity and security of the country, the democratic political system, and the Constitution.

94. Optional (b) is correct.

Explanation:

The tenth Timetable of the Indian Constitution (which discusses the counter absconding regulation) is intended to forestall political rebellions provoked by the bait of office or material

advantages or other like contemplations. The Counter absconding regulation was passed by Parliament in 1985 and built up in 2002. The tenth Timetable of the Indian Constitution prominently alluded to as the 'Counter Deserting Regulation' was embedded by the 52nd Amendment (1985) to the Constitution. 'Surrender' has been characterized as, "To forsake a position or affiliation, frequently to join a contradicting bunch". The counter surrender regulation was ordered to guarantee that a party doesn't disregard the command of the party and in the event that he does as such, he will lose his enrollment of the House. The law applies to both Parliament and state gatherings. The Counter Abandonment Regulation intends to keep MPs from exchanging ideological groups for any private rationale.

95. Optional (b) is correct.

Explanation –

Royal Indian navy was established in 1934.

96. Optional (b) is correct.

Explanation:

Abyssinian- Africa

Patagonian- South America

Anatolian – Asia

Iberian- Europe

97. Optional (a) is correct.

Explanation:

Isonif – snowfall

Isohel – Sunshine

Isohaline – Salinity

Isohypse – height contour

98. Optional (d) is correct.

Explanation:

2, 4, 1, 3 Cirro-structure The Latin word "cirro" signifies twist of hair. Made of ice precious stones, cirro-structure mists are whitish and hair-like. There are high, wispy mists to initially show up ahead of a low-pressure region, for example, a mid-scope storm framework or a tropical framework like a typhoon. Cumulo-structure By and large disconnected mists, they seem to be white feathery cotton balls. They show vertical movement or warm elevation of air occurring in the air. They are normally thick in appearance with sharp diagrams. The foundation of cumulus mists is for the most part level and happens at the elevation where the dampness in rising air gathers. Strato-structure From the Latin word for "layer", these mists are typically expansive and genuinely inescapable, seeming like a cover. They result from non-convective rising air and will generally happen along and toward the north of warm fronts. The edges of strato-structure mists are diffuse. Nimbo-structure Howard likewise assigned an exceptional downpour cloud classification which joined the three structures cumulo + cirro + stratus. He referred to this cloud as "aura", the Latin word for downpour. By far most of precipitation happens

from nimbo-structure mists and in this manner these mists are by and large the thickest.

99. Optional (b) is correct.

Explanation: Pink revolution - meat production India

Yellow Revolution- Oilseeds Production

Black Revolution – Biodiesel production

Golden Revolution – Honey and horticulture.

100. Optional (d) is correct.

Explanation:

Public Parkways Authority of India was shaped under the NHAI Act in 1988. An independent association takes care of the administration of the total organization of Public Expressways in the country. Base camp of the NHAI - New Delhi. It works under the Service of Street Transport and Thruways. NHAI marked a MoU with the Indian Space Exploration Association (ISRO) and the Northeast Community for Innovation Application and Exploration (NECTAR) in 2016 that permitted the utilization of spatial innovation for parkways checking. It has been depended on the Public Parkways Advancement Undertaking, which alongside other minor activities, has vested in it 50329 km of Public Expressways for improvement, support, and the board. As of July 2021, the absolute length of Public Roadways (counting freeways) in the nation is 1,32,499 km. While Thruways/Freeways comprise just around 1.7% of the length of all streets, they convey around 40% of the street traffic.

101. Optional (b) is correct.

Explanation:

NCGG the philosophy of 'Vasudeva Kutumbakam' and 'neighborhood first' policy advocated by Prime Minister Shri Narendra Modi, the capacity-building programmed of NCGG aim to promote citizen-centric policies, good governance, enhanced service delivery, and ultimately improve the quality of life for citizens.

102. Optional (b) is correct.

Explanation:

2, 1, 4, 3

Year	International Yoga Day Theme
2015	Yoga for Harmony & Peace
2016	Connect the Youth
2017	Yoga for Health
2018	Yoga for Peace
2019	Climate Action
2020	Yoga for Health - Yoga at Home
2021	Yoga For Wellness
2022	Yoga for Humanity

103. Optional (d) is correct.

Explanation:

This Joint Multinational Maritime Exercise between India, Brazil and South Africa Navies currently being held in South Africa from 10-12 October 2022. The previous edition of IBSAMAR (IBSAMAR

VI) was conducted in Simons Town, South Africa in 2018.

104. Optional (c) is correct.

Explanation:

Heliopolis War Graveyard, which incorporates two migrated remembrances - the Heliopolis (Port Tewfik) Dedication and the Heliopolis (Aden) Commemoration, is a conflict burial ground and commemoration in the Heliopolis locale of Cairo in Egypt for Federation (Pioneer English Domain) staff of English Indian Armed force who passed on in The Second Great War (WWI)

105. Optional (c) is correct.

Explanation:

Country's first Metro has conducted its trial run under the Hooghly River, Kolkata. This is also Kolkata's first underwater Metro trial run below the bed of Hooghly.

106. Optional (b) is correct.

Explanation:

India marked a remarkable victory in the South Asian Football Federation (SAFF) Championship 2023 held in Bengaluru, Karnataka, securing their ninth title by defeating Kuwait in a thrilling football match.

107. Optional (d) is correct.

Explanation:

The Blue Pansy, known for its vibrant blue hues. It is found in various parts of Southeast Asian countries, Australia, and Africa. With its territorial nature and stunning appearance, this butterfly captivates both enthusiasts and experts. The rich biodiversity of Jammu and Kashmir has received a significant boost with the official declaration of the Blue Pansy as the region's official butterfly. The Principal Secretary to the Government for the Department of Forest, Ecology, and Environment marks a crucial step towards preserving and protecting the natural heritage of this picturesque region.

108. Optional (c) is correct.

Explanation:

Days after the now notorious Titanic submarine 'Titan' which met its end in the wake of collapsing profound under the Atlantic Sea, killing every one of the five group individuals ready, the garbage of the vessel have been brought aground in Canada. This is whenever the remaining parts first have been seen since the occurrence. The remaining parts and pieces of Titan were brought to St John's Newfoundland by the Canadian-hailed vessel Skyline Cold, the US Coast Watchman said. The authorities have said that the sub's arrival outline and a back cover were found among the flotsam and jetsam.

109. Optional (c) is correct.

Explanation:

Dr. Syama Prasad Mookerjee Road Tunnel in Jammu and Kashmir regarded as the longest

tunnel in India, the Syama Prasad Mookerjee Road tunnel measures 9.34 km long. It starts at Chenani and ends at Nashr.

110. Optional (a) is correct.

Explanation:

AWARDEE

CATEGORY

- | | |
|----------------------|--------------------------|
| 1. Dilip Mahalanabis | Medicine |
| 2. Sudha Murthy | Social Work |
| 3. S.M. Krishna | Public Affairs |
| 4. S.L. Bhyrappa | Literature and Education |

111. Optional (c) is correct.

Explanation:

Hornbill festival- The Celebration is commended in Nagaland to support ancestral collaboration and to safeguard, secure and restore the uniqueness and wealth of the Naga legacy. It is coordinated by State The travel industry and Craftsmanship and Culture Offices and furthermore upheld by Association Government. Chapchar Kut is a festival held fully expecting a brilliant gathering. Seeing people wearing vivid conventional dresses is genuinely enchanting. Every one individual assembles for a gigantic local area fest to sing and get into the rhythm of woodwind, cymbals, drums, and gongs. The Nongkrem dance celebration is a five-day long occasion and there are numerous ceremonies performed including the ongoing illustrious of the Khyrim Hima (realm). The individuals are broadly perceived and venerated in customary organization and remain torchbearers for the extremely old native acts of the Khasis. Adventure Dawa or the Triple Favored Celebration is a promising month for the Sikkimese Buddhists with petitions to God held all through the month in different religious communities. On the full moon of this fourth month of the Tibetan schedule [celebrated as Buddha Purnima in the remainder of India] is the fundamental festival.

112. Optional (d) is correct.

Explanation:

The Indian Air Force is going to carry out the maiden firing of the S-400 missiles soon. Senior defence officials told ANI that the Indian forces had carried out the firing of the Russian-origin missile system during trials in Russia, but it is yet to be fired in the country. "The firing is planned to be held very soon using one of the small or medium ranges missiles against a fast-moving aerial target," defense officials told ANI here.

113. Optional (c) is correct.

Explanation:

He won the gold decoration in the Men's 10m Air Rifle occasion at the 2008 Summer Olympics held in Beijing on August 11, 2008. This memorable accomplishment denoted a huge achievement for India in the field of sports and carried colossal pride to the country.

114. Optional (d) is correct.

Explanation:

The word "cheetah" comes from the Sanskrit word, "chitraka", and that signifies "spotted one".

115. Optional (b) is correct.

Explanation:

A new species of green pit vipers of the genus *Trimeresurus Lacépède*, 1804 (Reptilia: Serpentes: Viperidae) from western Arunachal Pradesh, India.

116. Optional (b) is correct.

Explanation:

The prestigious badminton tournament is highly competitive and only twice has there been an Indian winner. Lakshya Sen is the latest to enter this exclusive list of players who are finalists at the All-England Open Championship. Prakash Padukone achieved the feat way back in 1980 and also became the second Indian shuttler to reach the final. Saina Nehwal record-breaking shuttler became the first Indian female to reach the final of the All-England Open Championship in 2015.

117. Optional (a) is correct.

Explanation:

President Tayyip Erdogan has won re-election according to the country's Supreme Election Council and unofficial data from the state-run Anadolu Agency. With 100 percent of ballot boxes opened in the run-off, Erdogan has 52.18 percent of the vote, and challenger Kemal Kilicdaroglu has 47.82 percent.

118. Optional (c) is correct.

Explanation:

Time Shelter, written by Georgi Gospodinov and translated into English by Angela Rodel, has won the International Booker Prize 2023, edging out six other novels on the shortlist. This is the first time a novel originally published in Bulgarian has won the annual award, given to a work of fiction translated into English and published in the United Kingdom in the preceding year. Last year, the prize went to Geetanjali Shree's *Tomb of Sand*, translated into English by Daisy Rockwell.

119. Optional (d) is correct.

Explanation:

The Honorary Order of the Yellow Star is the highest state decoration of the Republic of Suriname. The Order was instituted in 1975 at the independence of Suriname and replaced the Dutch Order of the Netherlands Lion.

120. Optional (b) is correct.

Explanation:

The new Parliament building will have a peacock-themed ceiling and carpets, and Prime Minister Narendra Modi will officially open it on May 28. Another video of the Parliament House shows the Lok Sabha and the Rajya Sabha from high points. The new Parliament has been developed on three subjects - the banyan tree, peacock, and the lotus.